

*CARROLL COUNTY
ORGANIZATIONAL
CHART*

AUDITOR'S OFFICE

LYNN FAIRCLOUGH
AUDITOR

MANUFACTURED HOMES
JOURNAL ENTRIES;
TRANSFERS;
REAL ESTATE;
CORRESPONDENCE; &
LICENSES

MARILYN MILLER
DEPUTY

KRISTEN YEAGER
DEPUTY

LINDA DOWDELL
DEPUTY

BRITTANY TANGLER
CHIEF DEPUTY II

REAL ESTATE

STACI BRADY
CHIEF DEPUTY

VALERIE MOSSOR
DEPUTY

PAYROLL
& INSURANCE

BRITTANY TANGLER
CHIEF DEPUTY II

NATALIE WITTS
DEPUTY

BUDGETARY
& PURCHASE ORDERS

STACY TAYLOR
DEPUTY

NATALIE WITTS
DEPUTY

DOCUMENT
SCANNING

RUTH MORGAN
DEPUTY

WARRANTS

STACY TAYLOR
DEPUTY

NATALIE WITTS
DEPUTY

HOMESTEADS

KRISTEN YEAGER
DEPUTY

LINDA DOWDELL
DEPUTY

BRITTANY TANGLER
CHIEF DEPUTY II

WEIGHTS &
MEASURES

KRISTEN YEAGER
DEPUTY

REAL ESTATE
INSPECTOR
& CAUV PROGRAM

VALERIE
MOSSOR
DEPUTY

TAIT CARTER
DEPUTY

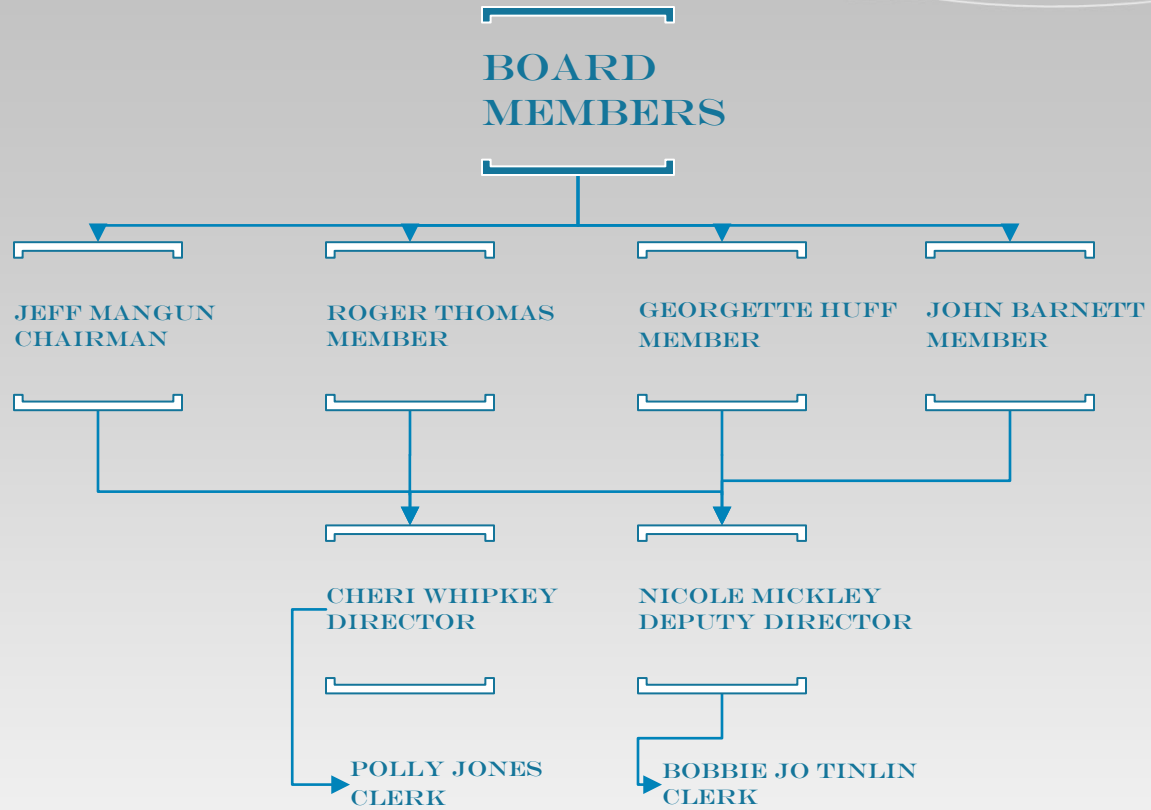
RECORDS
RETENTION

KRISTIN YEAGER
DEPUTY

LINDA DOWDELL
DEPUTY

May 12, 2020

BOARD OF ELECTIONS



BOARD OF DEVELOPMENTAL DISABILITIES

(CCBDD)

Matt Campbell
SUPERINTENDENT

AMY SWAIM
EXECUTIVE SECRETARY

ASHLEY HYDE
COMMUNITY
NETWORK
COORDINATOR

MATT CAMPBELL
DIRECTOR OF
SERVICES &
SUPPORTS

RAY HEASTON
BUSINESS
MANAGER

RYAN BUCK
DIRECTOR OF
EDUCATIONAL
SERVICES

JOANN HILLIARD
TRAINING
COORDINATOR

SABRINA SEAL
COMMUNITY
EMPLOYMENT
SUPERVISOR

DAVE HAUGHT
BUILDING &
TRANSPORTATION
MAINTENANCE
SUPERVISOR

**SERVICE &
SUPPORT**
SHANNON BOON
VICKI BRUMBACK
LISA ERWIN
MELISSA
STRFFELER
-TOOTHMAN
DENISE JURSKO
KELLY KIDDER

CHS SECRETARY
CINDY JONES

**ADMINISTRATIVE
ASSISTANT**
TONYA HAWK

RN
KIM YEAGER

LPN
BILL MANNION

**CLASSROOM
TEACHERS**

**DEVELOPMENTAL
SPECIALIST**
JESSICA LAFFERTY
**VOCATIONAL &
WELLNESS
ASSISTANT**
JESSICA COLLINS

TIM LIVERSAGE
COMMUNITY
RELATIONS /
SPECIAL PROJECTS
COORDINATOR

**CDL VEHICLE
OPERATORS**
Vera Fox
Cathi Koffel
Randy Mullen
Rhonda Powals
Sandra Ray (S)
Ang Casebott (S)

JOB COACH
REVA CASTELUCCI
VIVIAN DAY
TARA BURKE

CUSTODIAN
MARK HERRON
MARGARET MESLER

**CHS
MAINTENANCE**
DAVE HENRY

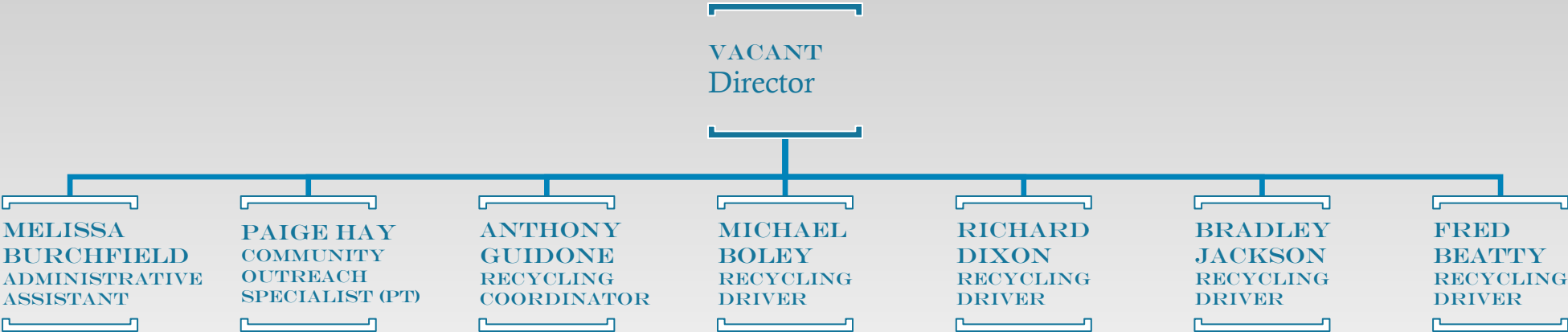
CLASSROOM AIDES

Amy Burgett	Michelle Rutledge
Allison Carpenter	Debbie McCauley
Erin Dinger	Jodie McCauley
Nancy Fisher	Linda Miller
Sandra Fixel	Kayla Morgan
Nikki Fletcher	Cheryl Rohr
Ramona Fluharty	Mindy Shepherd
Rosebud Howell	Denelle Smith
Donna Locker	Amber Veach

Nancy Boley
Shelly Haught
Mackenzie Ray
Mary Service
Kaitlyn Turachak
Zoe Gingerich (S)
Cynthia Ludy (S)

May 12, 2020

CCH SOLID WASTE MANAGEMENT DISTRICT



CLERK OF COURTS

BILL WOHLWEND
CLERK OF COURTS
COMMON PLEAS

CONNIE BUDINSKY
CHIEF DEPUTY CLERK
ADMINISTRATIVE ASSISTANT

TITLE OFFICE

LEGAL OFFICE

DIXIE K. PAVICK
DEPUTY

LUANNE RIEGLE
DEPUTY

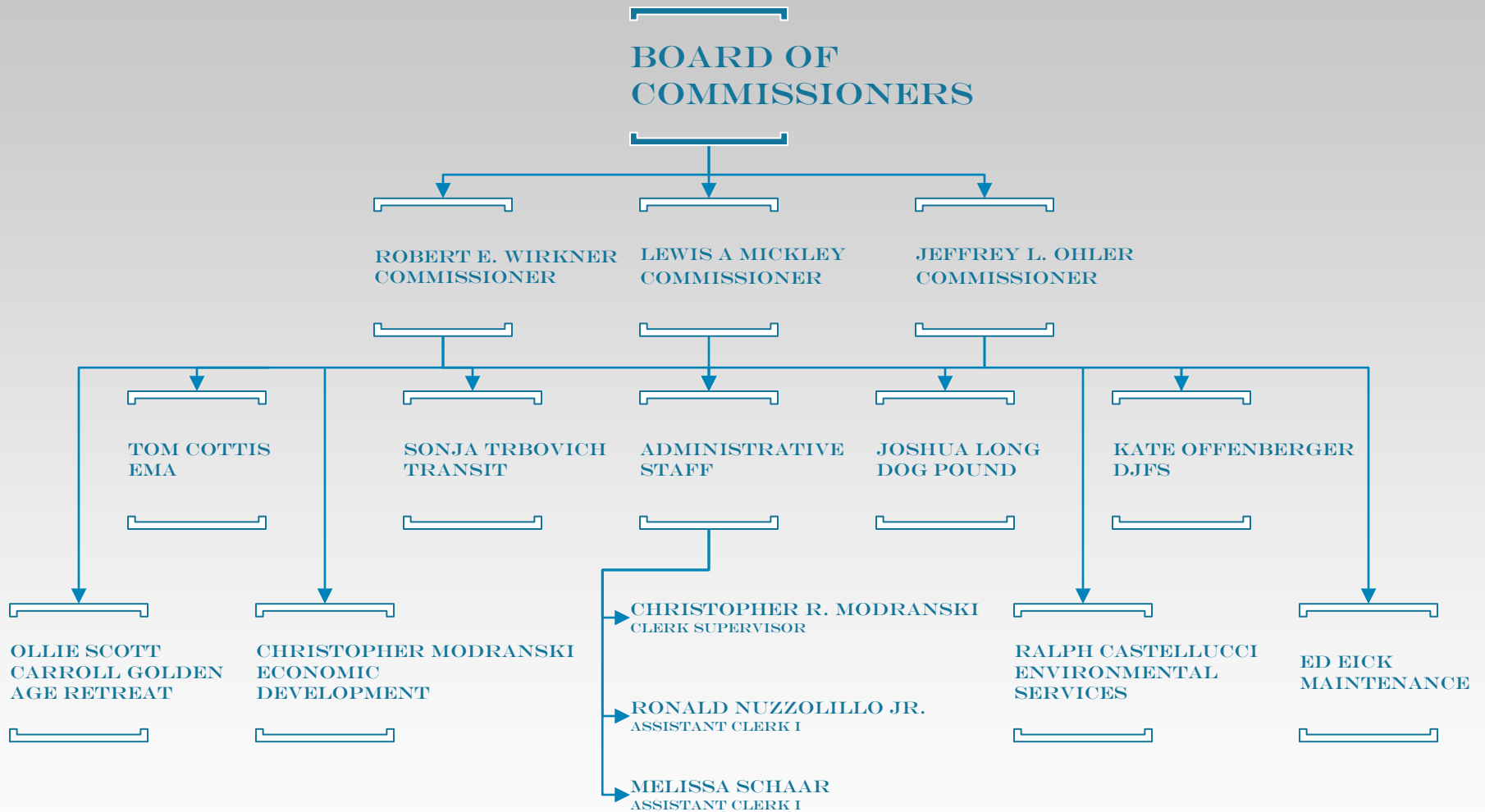
VACANT
DEPUTY

DENISE SMITH
DEPUTY

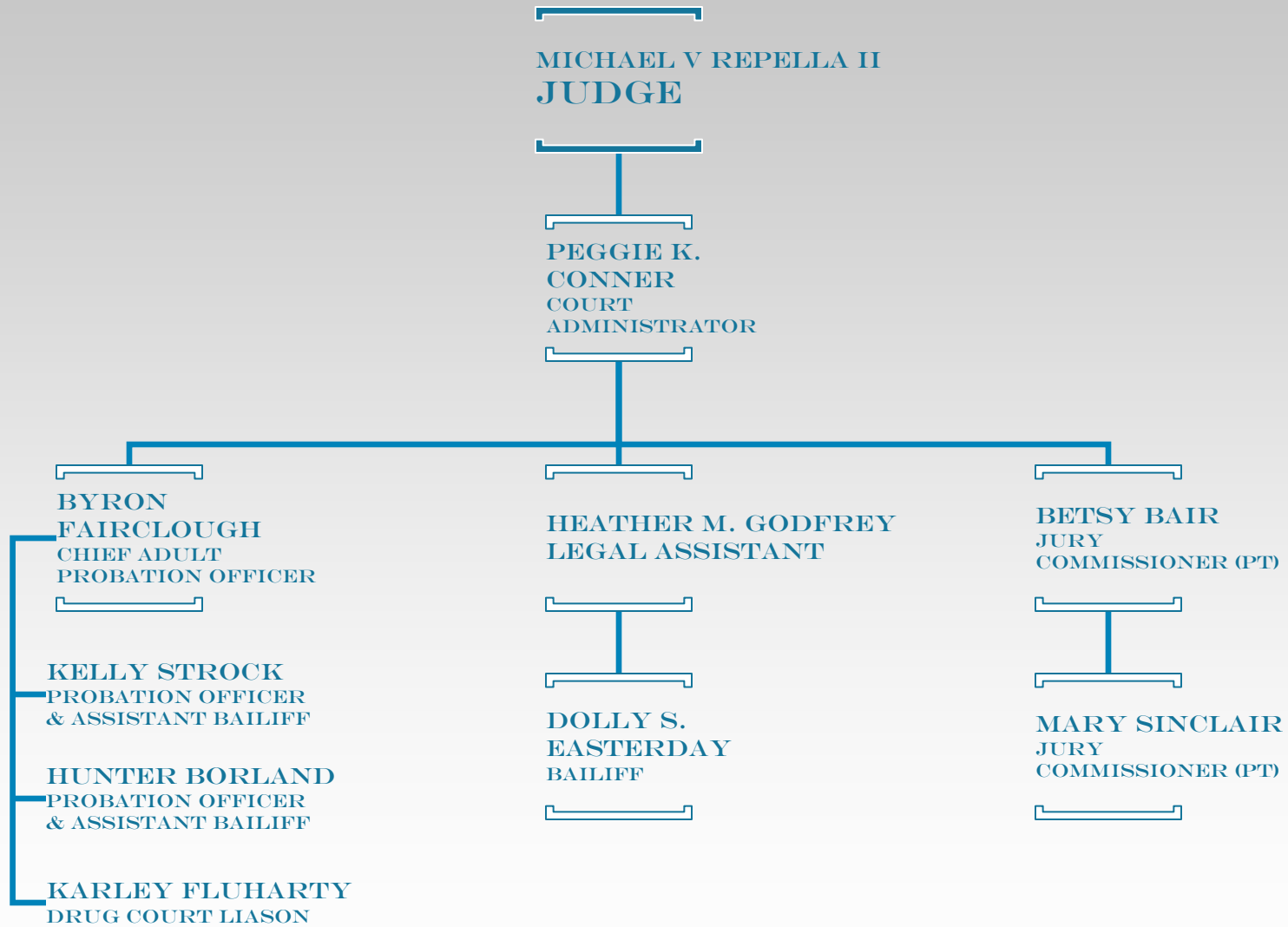
JEAN JAVERSAK
DEPUTY

VACANT
DEPUTY

CARROLL COUNTY COMMISSIONERS



COMMON PLEAS COURT

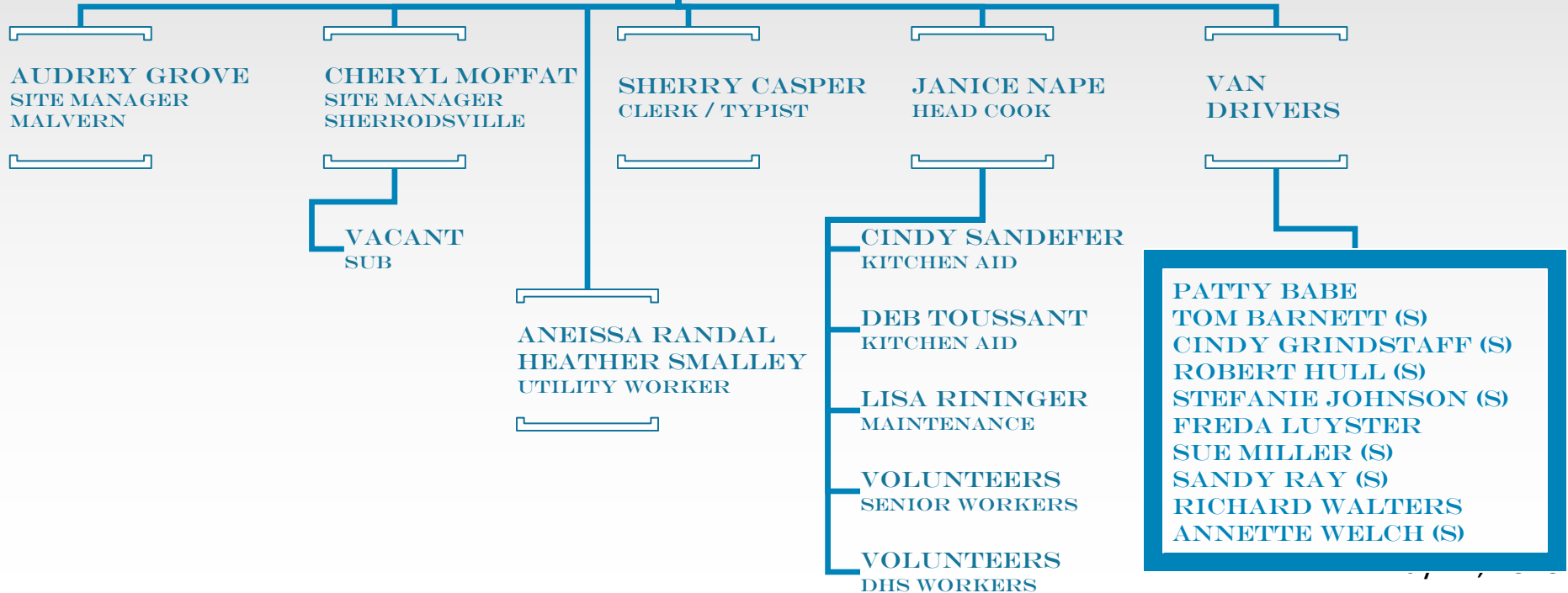


COUNCIL ON AGING

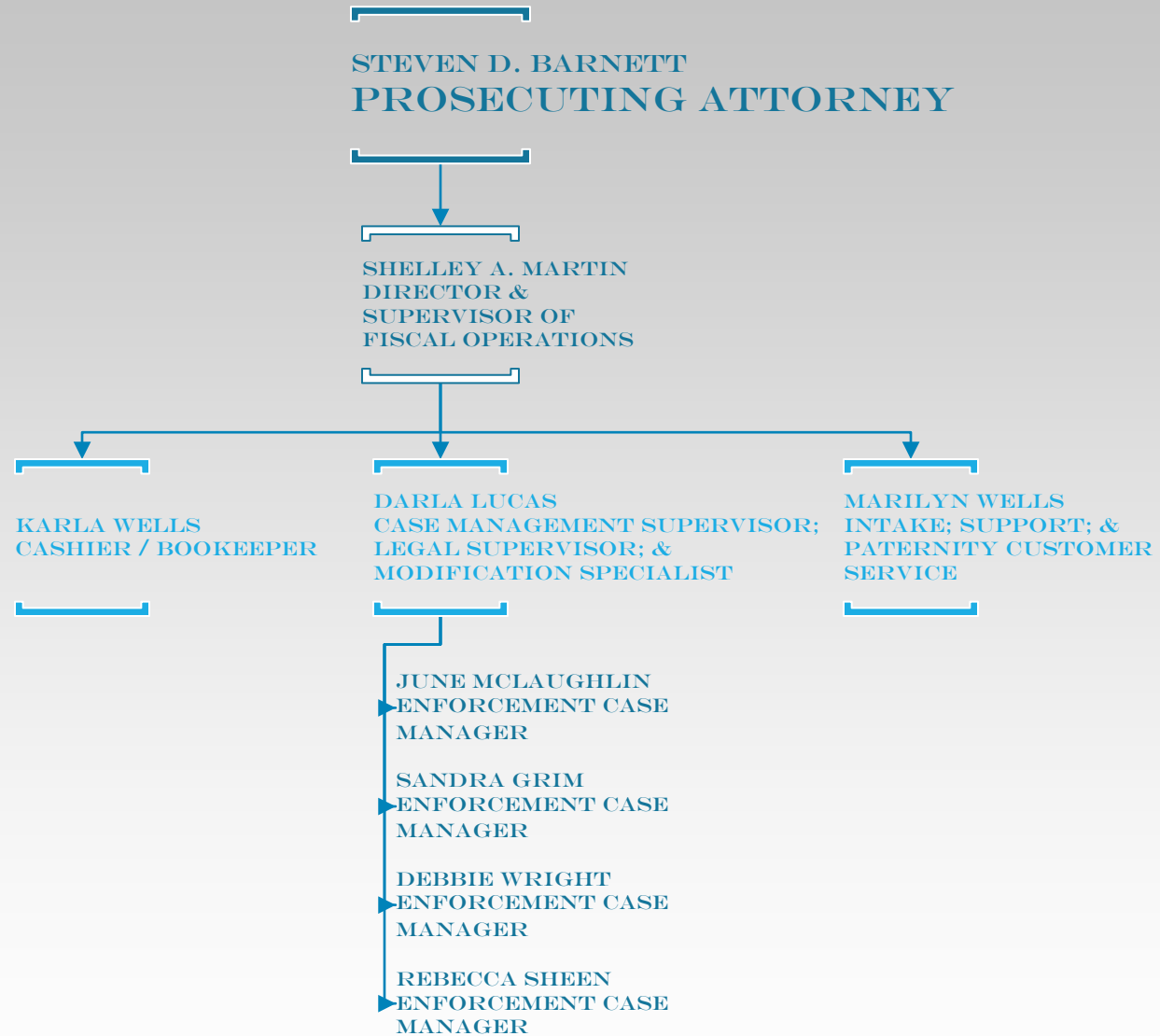
BOARD OF DIRECTORS

TONYA MYERS
DIRECTOR &
COORDINATOR

JENNA AUKERMAN
ASSISTANT DIRECTOR



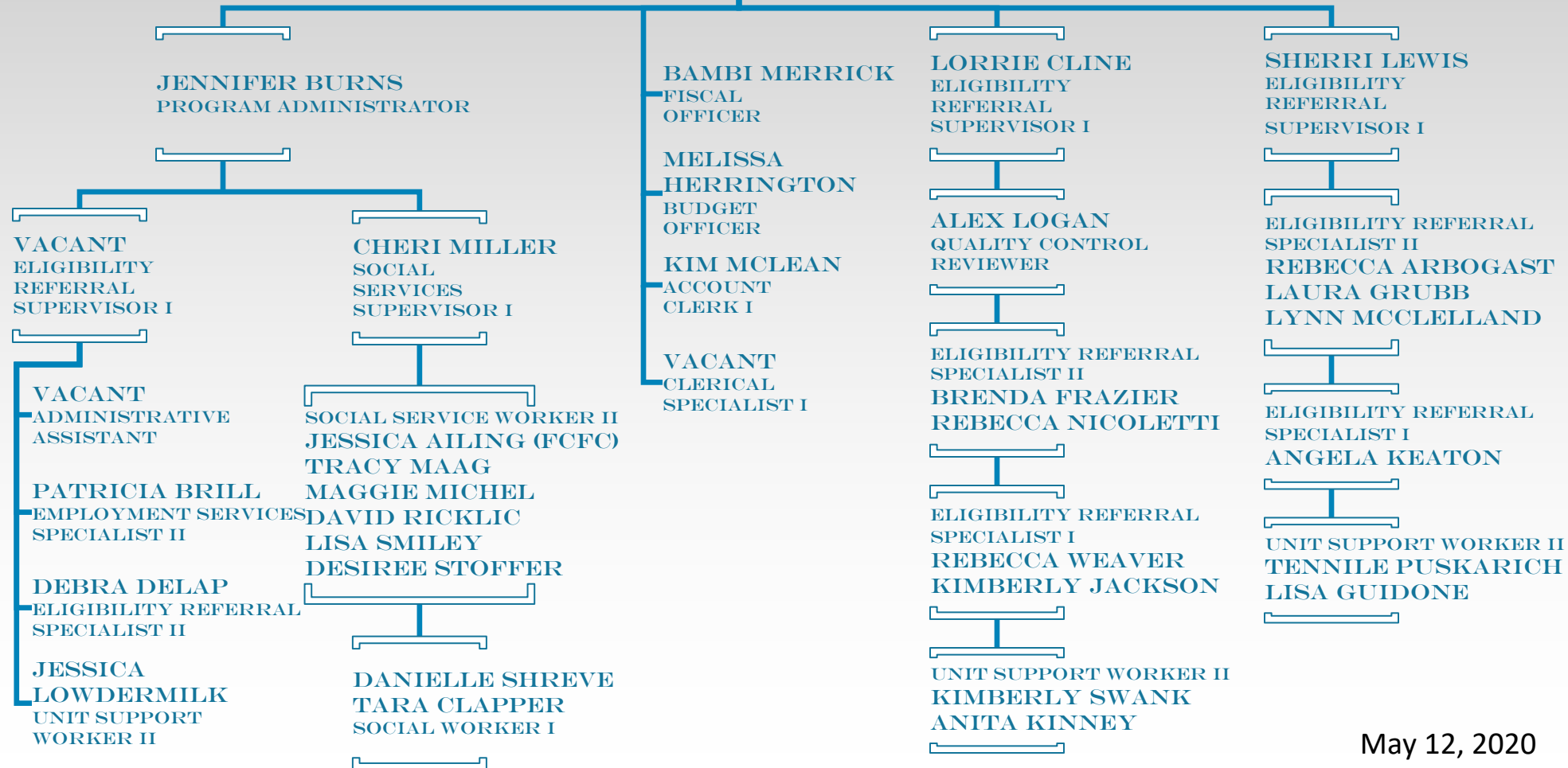
CHILD SUPPORT ENFORCEMENT AGENCY



JOB & FAMILY SERVICES

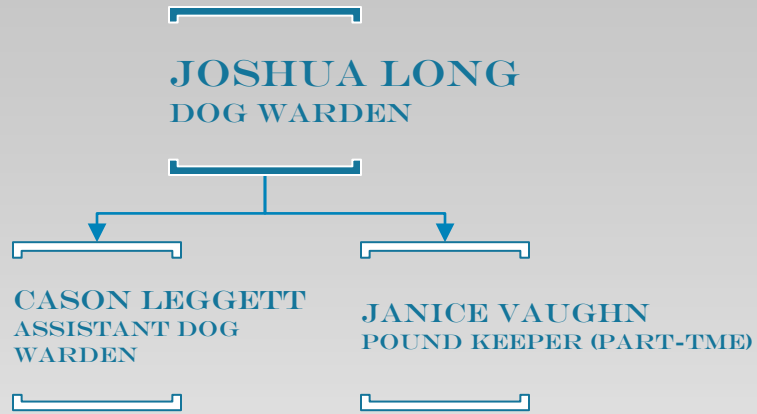
KATE OFFENBERGER
DIRECTOR

VACANT
ASSISTANT DIRECTOR



May 12, 2020

DOG POUND



ECONOMIC DEVELOPMENT



CHRISTOPHER R. MODRANSKI
DIRECTOR



VACANT
ASSISTANT DIRECTOR



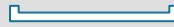
EMERGENCY MANAGEMENT AGENCY



TOM COTTIS
EMA DIRECTOR

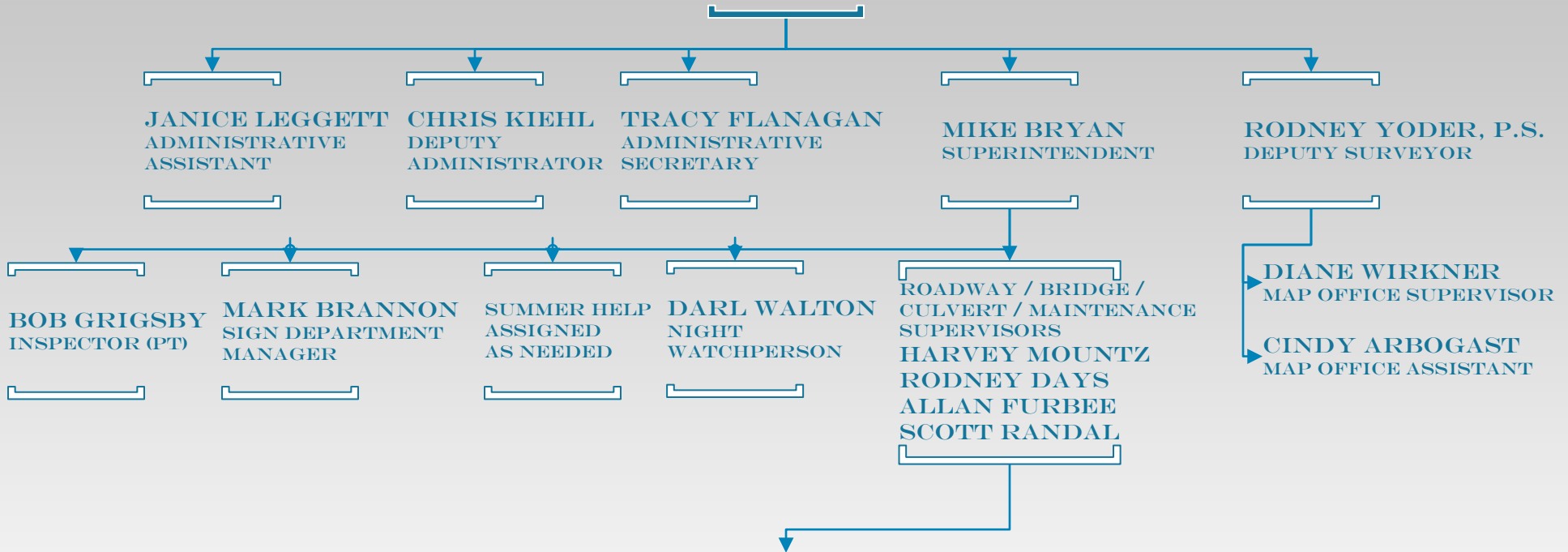


DEVIN HERRINGTON
EMA/LEPC
DEPUTY DIRECTOR



ENGINEER

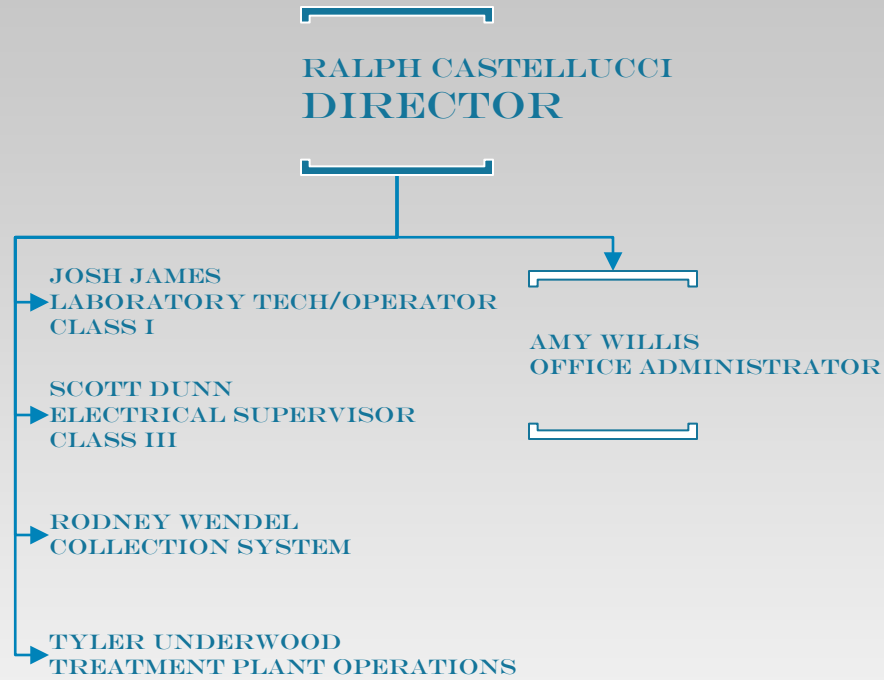
BRIAN J. WISE, P.E., P.S.
COUNTY ENGINEER



HIGHWAY WORKER I - HIGHWAY WORKER IV (ASSIGNED AS NEEDED)

CLINT CASPER	COREY CLARK	JOHN DALONZO	DALE GEORGE
LARRY GRANGER	CHRIS HAWK	BRUCE HLLIARD	TOM JONES
MIKE KRUPRZAK	CALVIN LOGAN	MATT MANFULL	PETE MCINTIRE
JEFF RIEGLE	BRANDON RIGGS	DAVE SECK	DALE TINLIN
JIM UJICH	MARK WATTS		

CARROLL COUNTY ENVIRONMENTAL SERVICES



FAMILY & CHILDREN FIRST COUNCIL (FCFC)



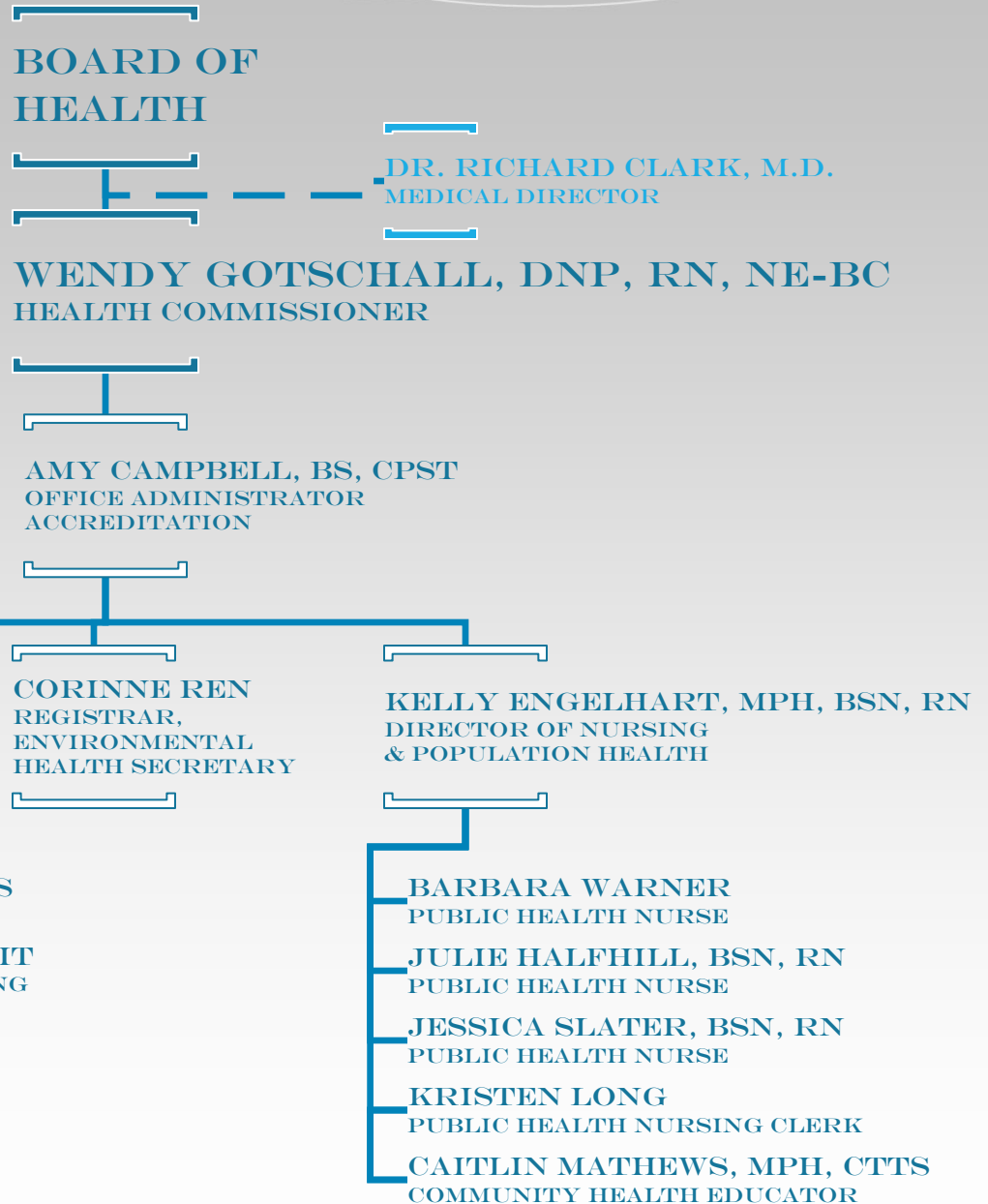
JENNIFER BURNS
COORDINATOR



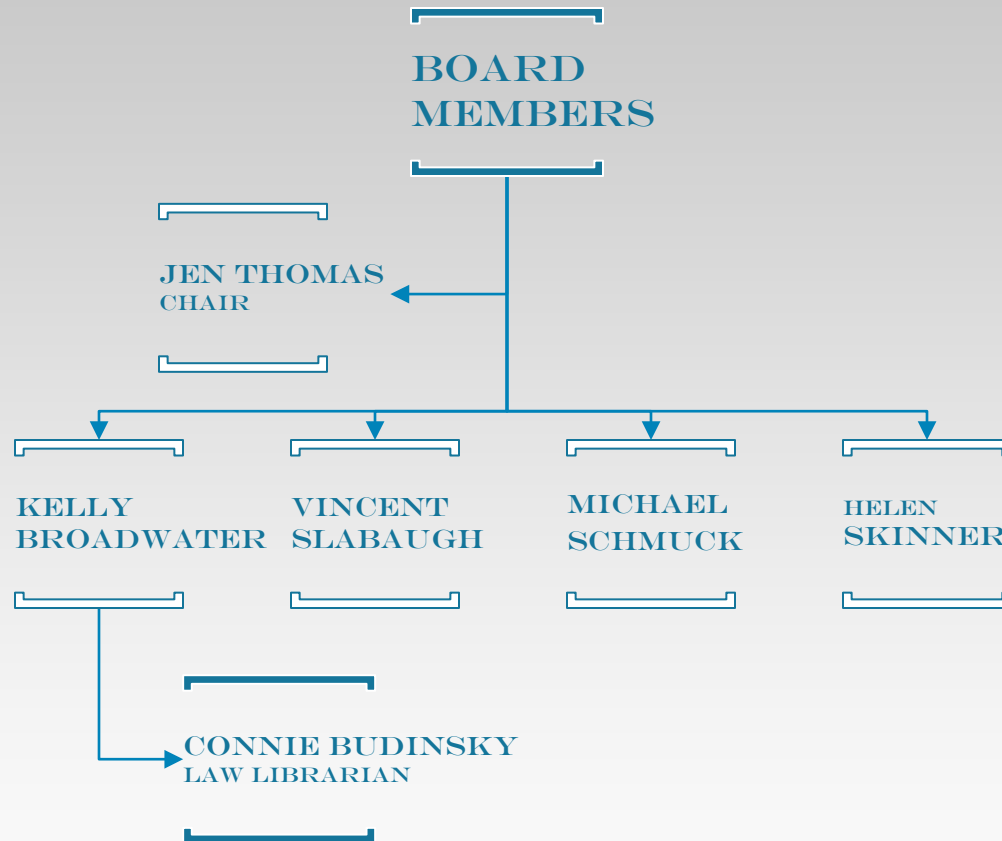
JESSICA AILING
SERVICE COORDINATOR



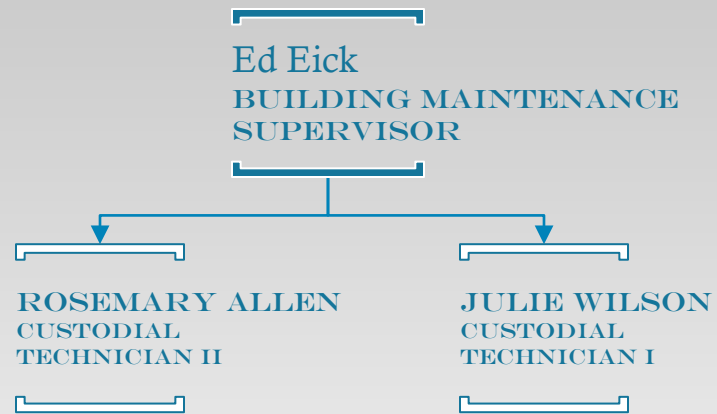
GENERAL HEALTH DISTRICT



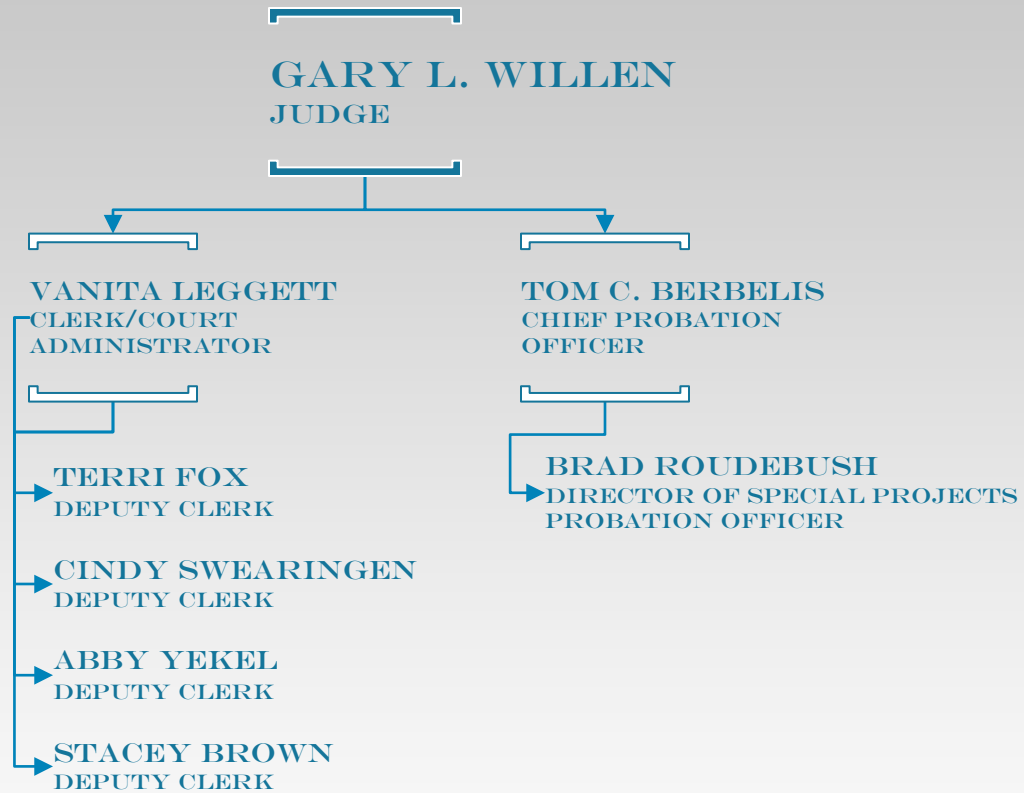
CARROLL COUNTY LAW LIBRARY ASSOCIATION



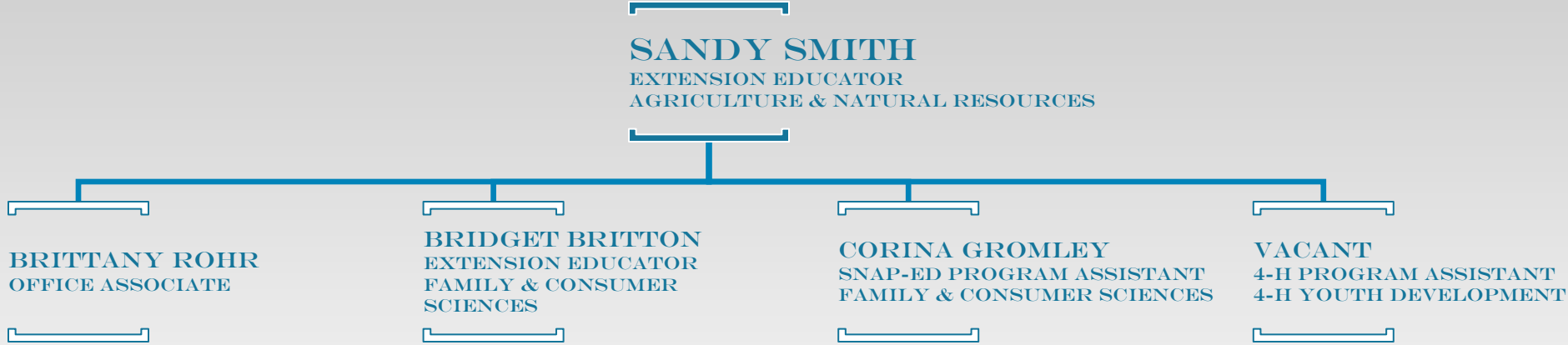
BUILDING & GROUNDS MAINTENANCE



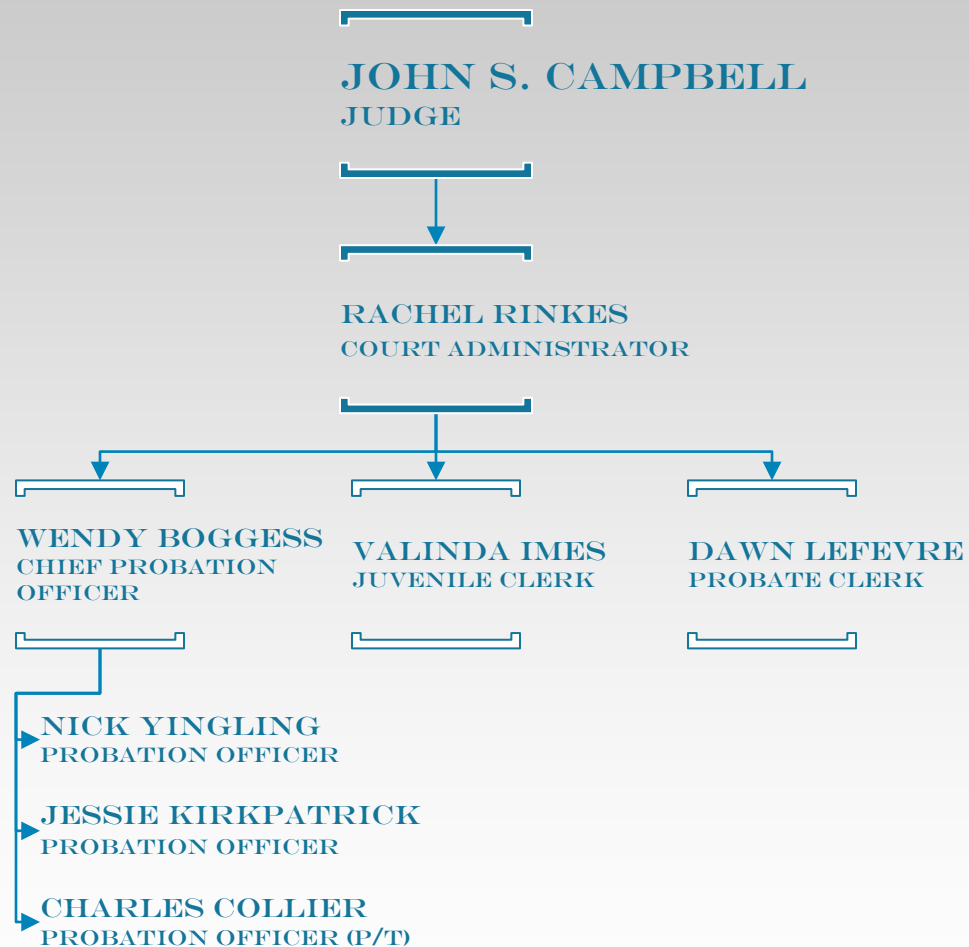
MUNICIPAL COURT



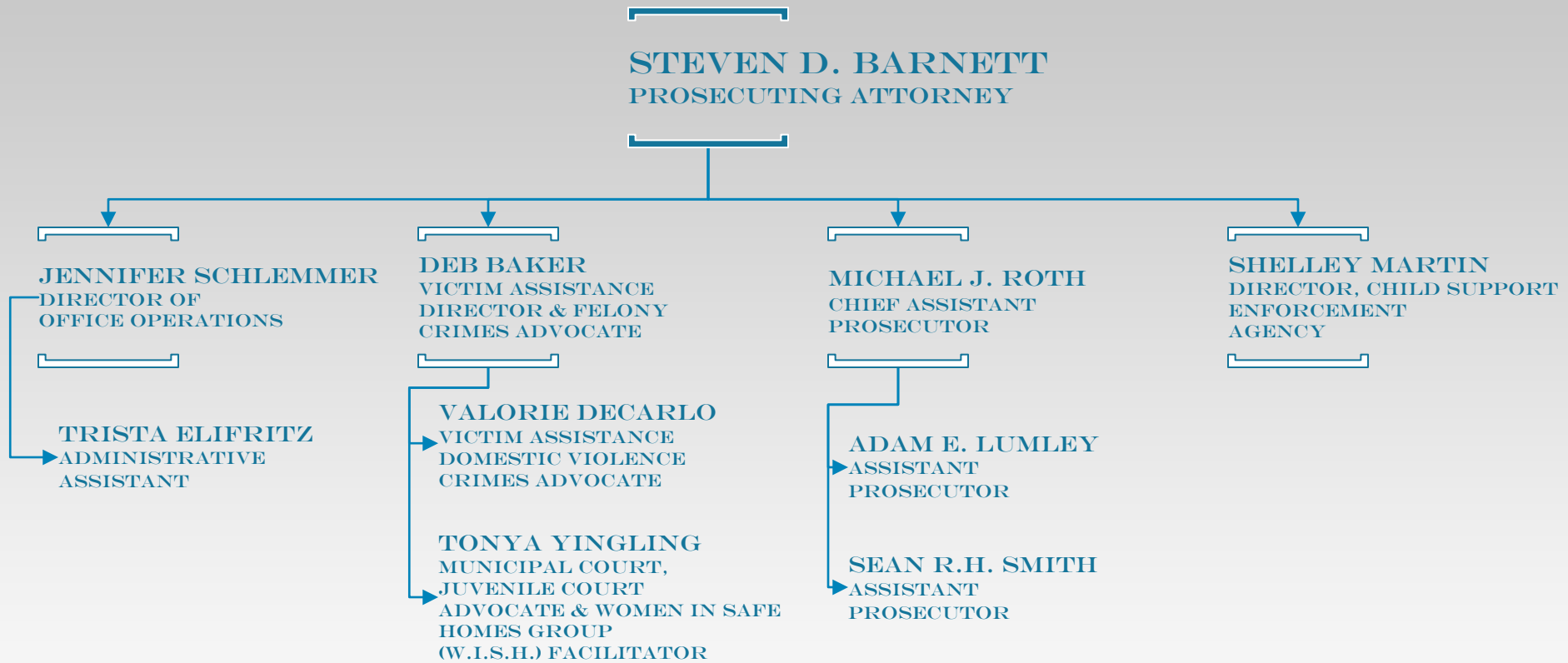
OHIO STATE UNIVERSITY EXTENSION



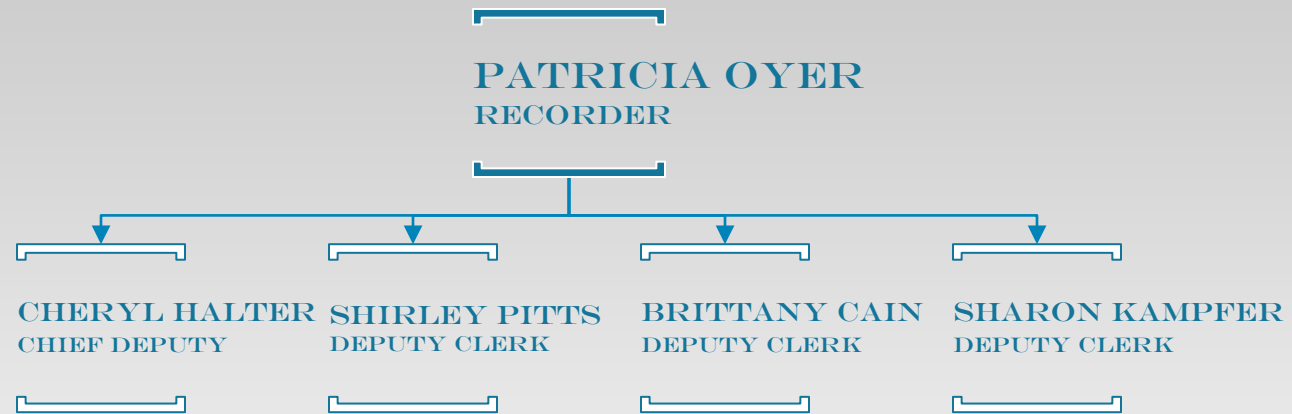
PROBATE / JUVENILE COURT



PROSECUTING ATTORNEY



RECORDER



REGIONAL PLANNING

BOARD

GARY PEARCE, PRESIDENT
ROD YODER, VICE PRESIDENT
MELISSA SCHAAR, SECRETARY



TOM KONST
DIRECTOR

SOIL & WATER CONSERVATION DISTRICT

BOARD MEMBERS

BRAD LUCKEY, CHAIRPERSON
JOHN MCKARNS, VICE CHAIRPERSON
BYRON SHANKEL, TREASURER
DOUG ESHLER, SECRETARY
CLIFFORD MILLER, FISCAL AGENT



AMANDA TUBAUGH
DISTRICT ADMINISTRATOR



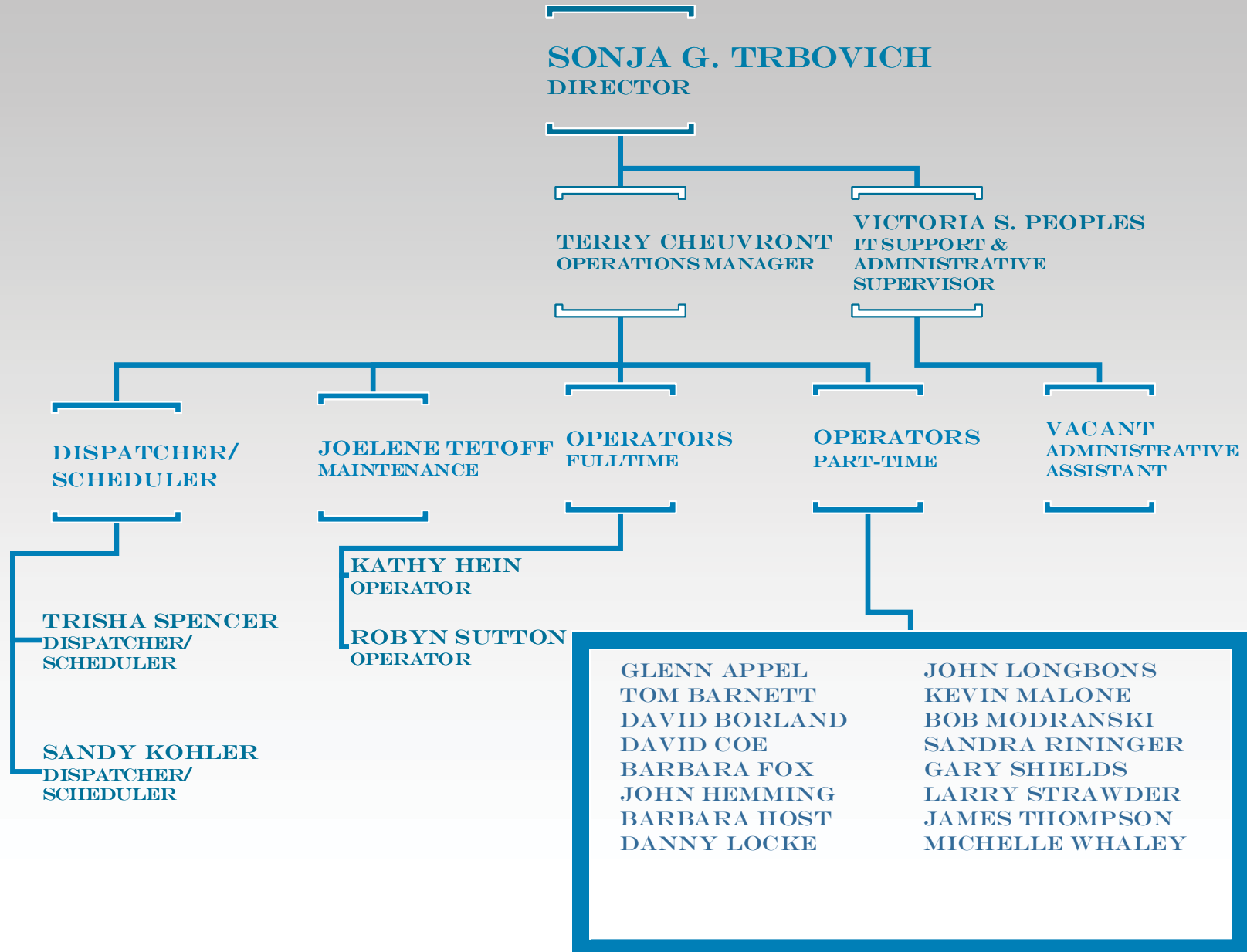
JASON REYNOLDS
TECHNICIAN

JOSEPH MAYLE
TECHNICIAN

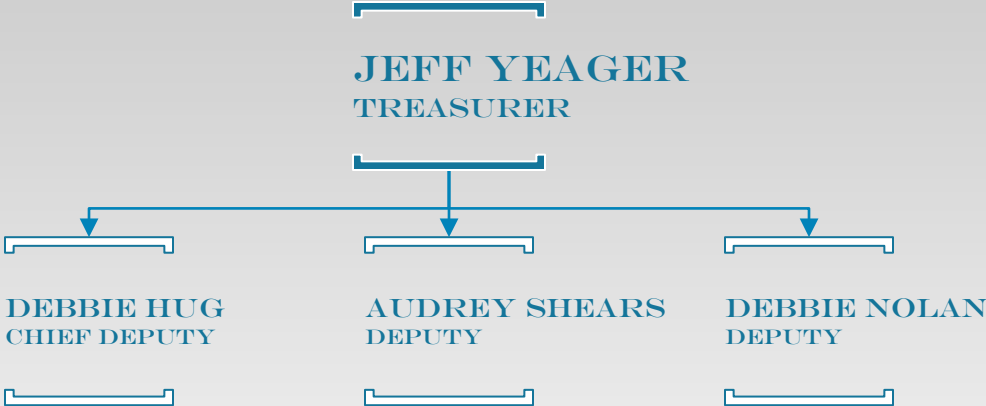
KISTY DICKEY
WATERSHED SPECIALIST

SHERRY LIBER
ADMINISTRATIVE ASSISTANT

TRANSIT



TREASURER



VETERANS SERVICE COMMISSION

