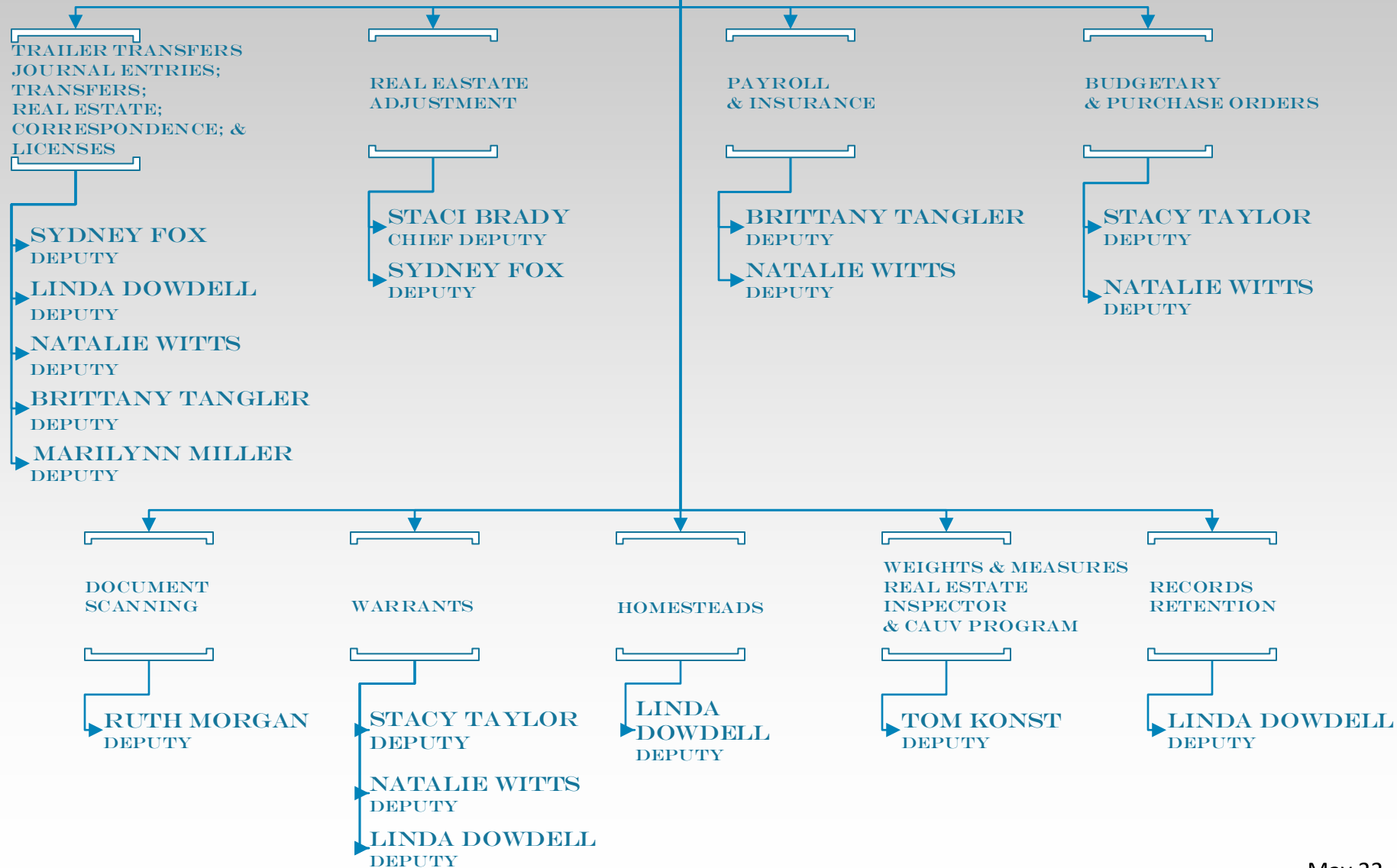


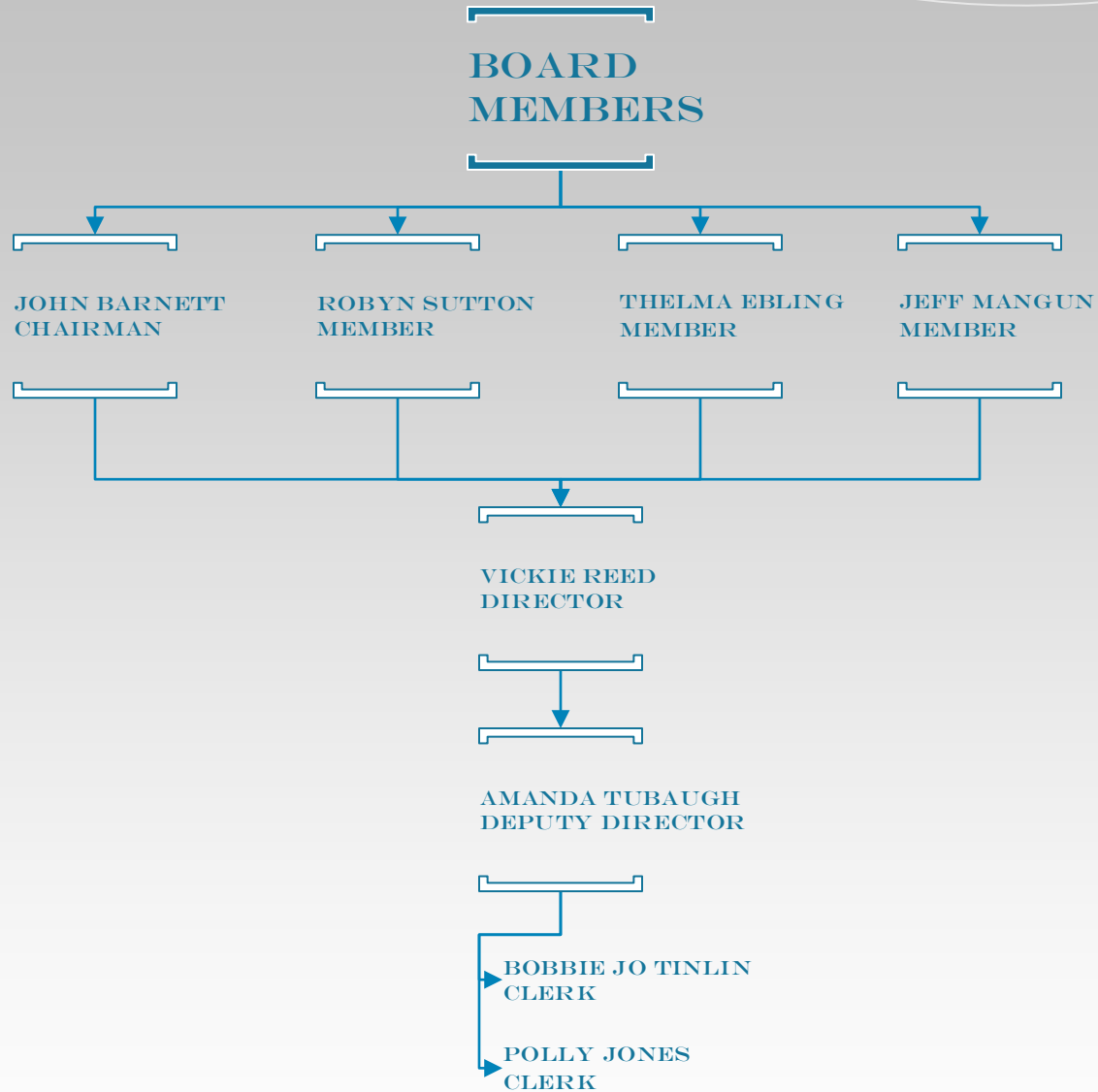
*CARROLL COUNTY
ORGANIZATIONAL
CHART*

AUDITOR'S OFFICE

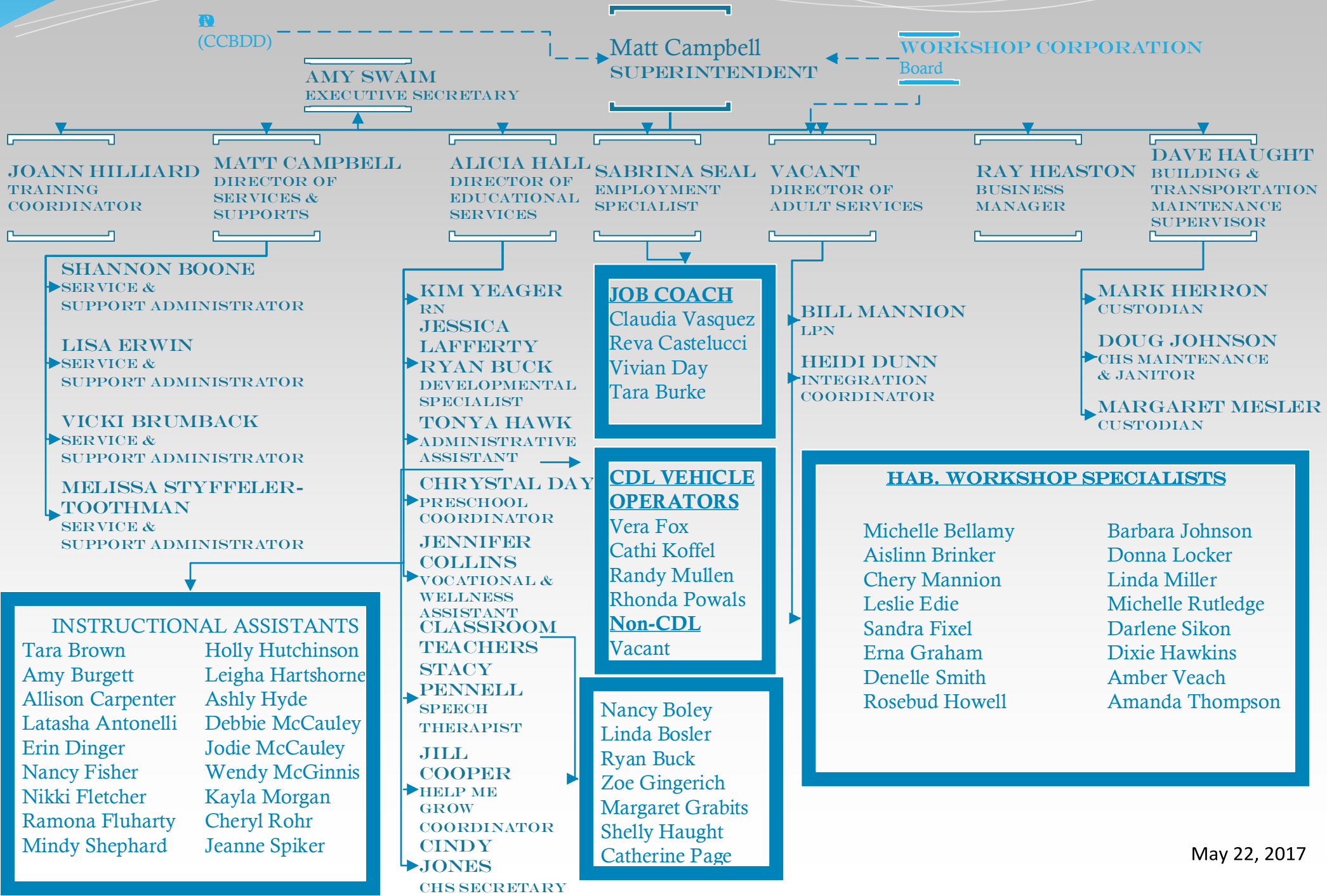
LYNN FAIRCLOUGH
AUDITOR



BOARD OF ELECTIONS



BOARD OF DEVELOPMENTAL DISABILITIES

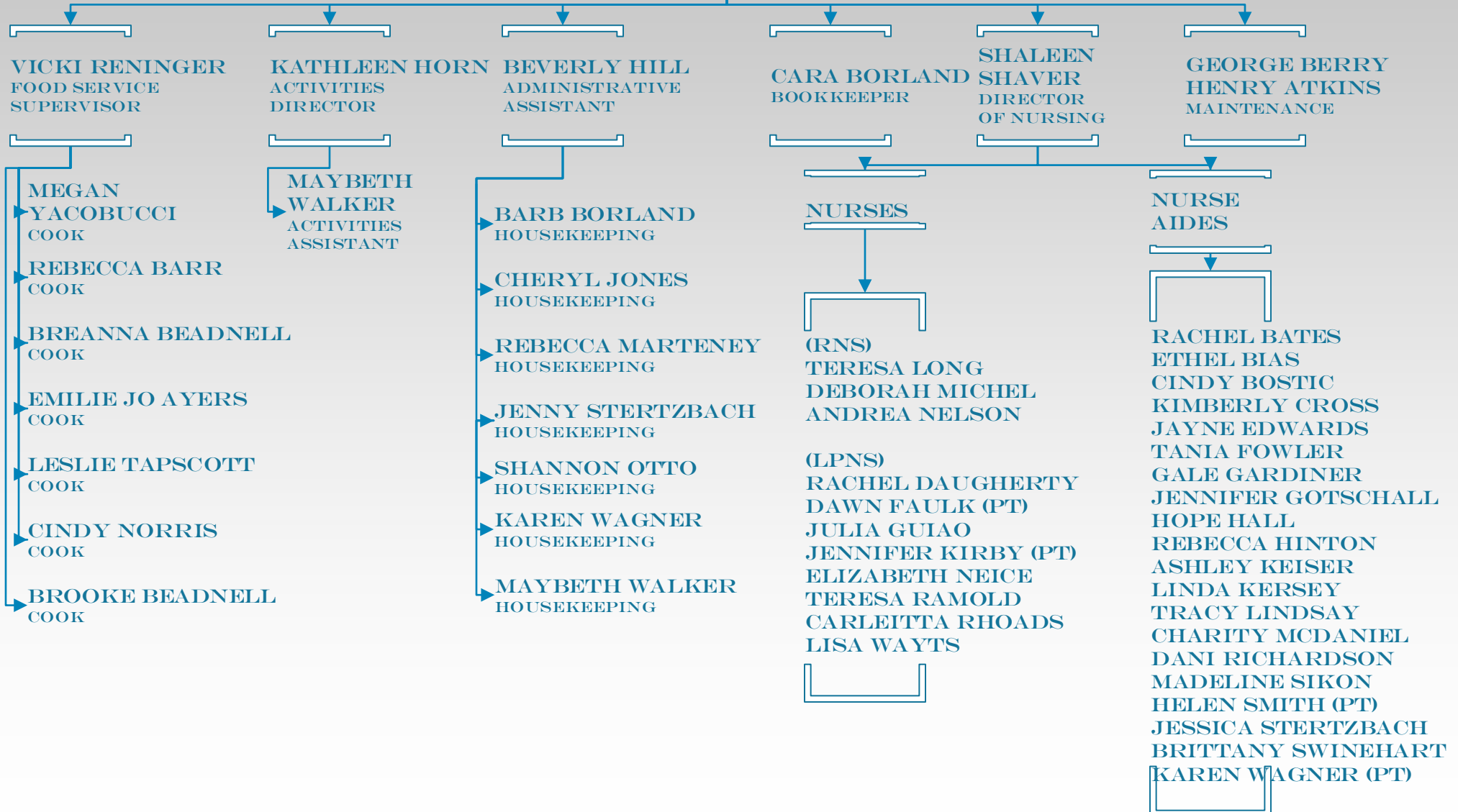


CCH SOLID WASTE MANAGEMENT DISTRICT

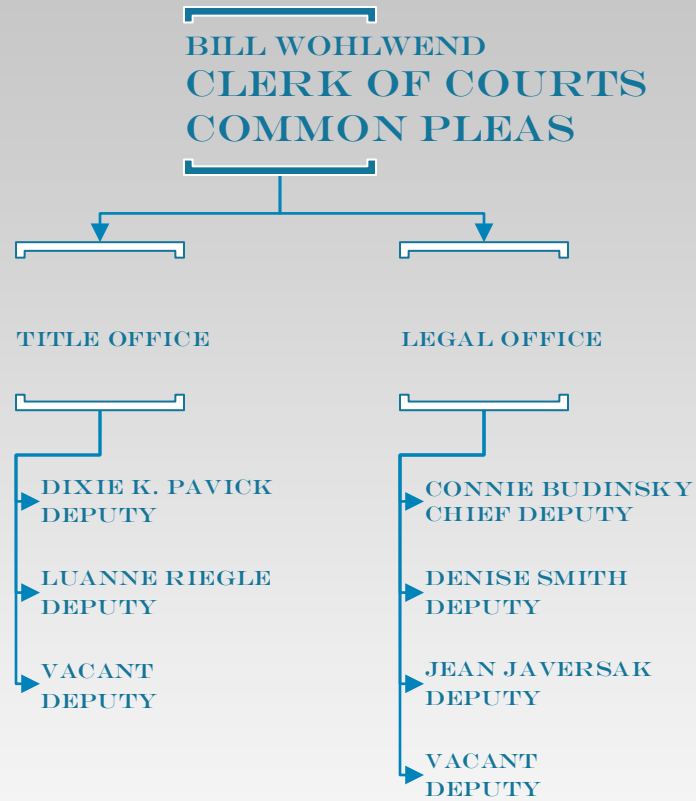


CARROLL GOLDEN AGE RETREAT

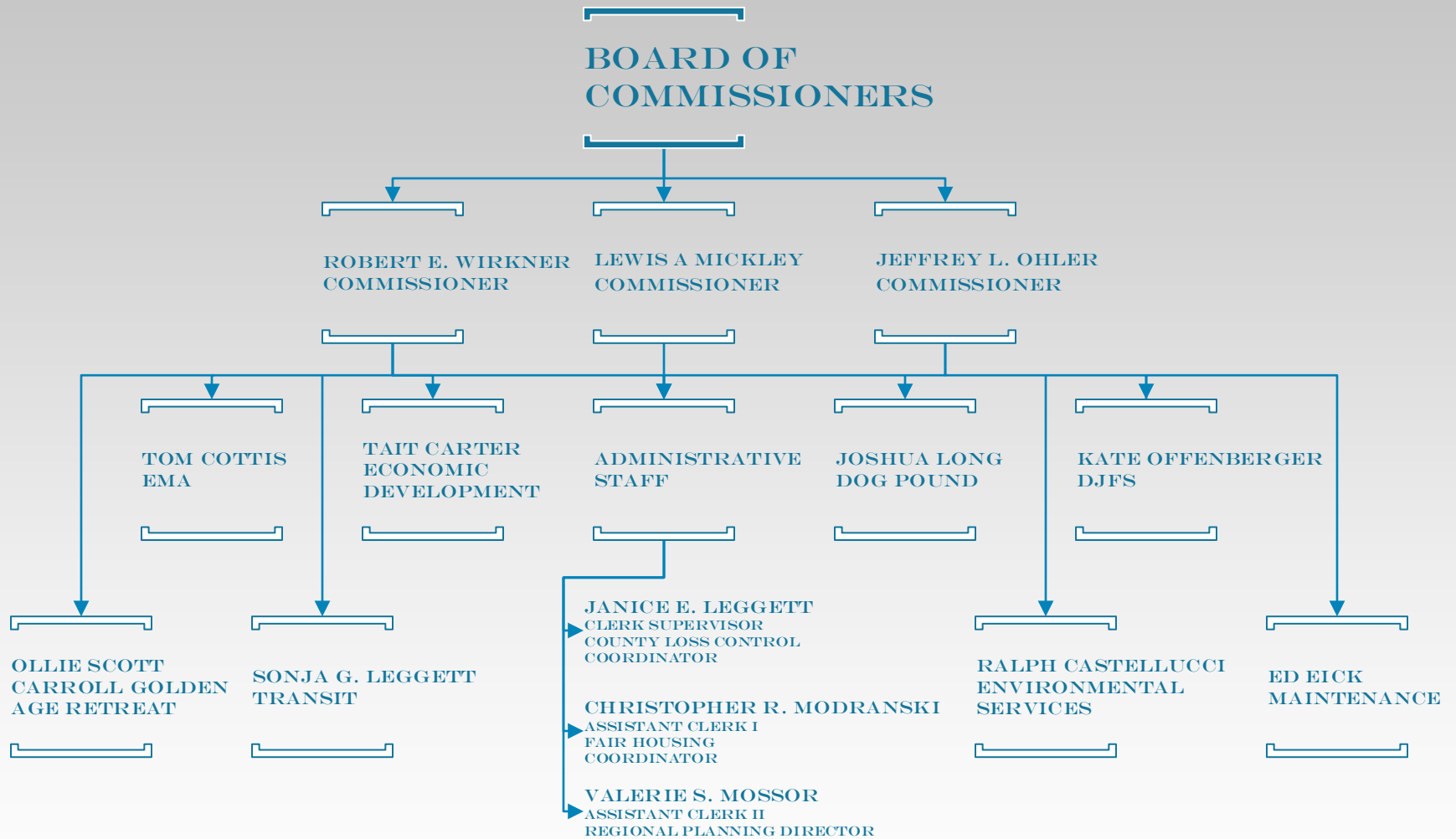
OLLIE SCOTT, RN
SUPERINTENDENT



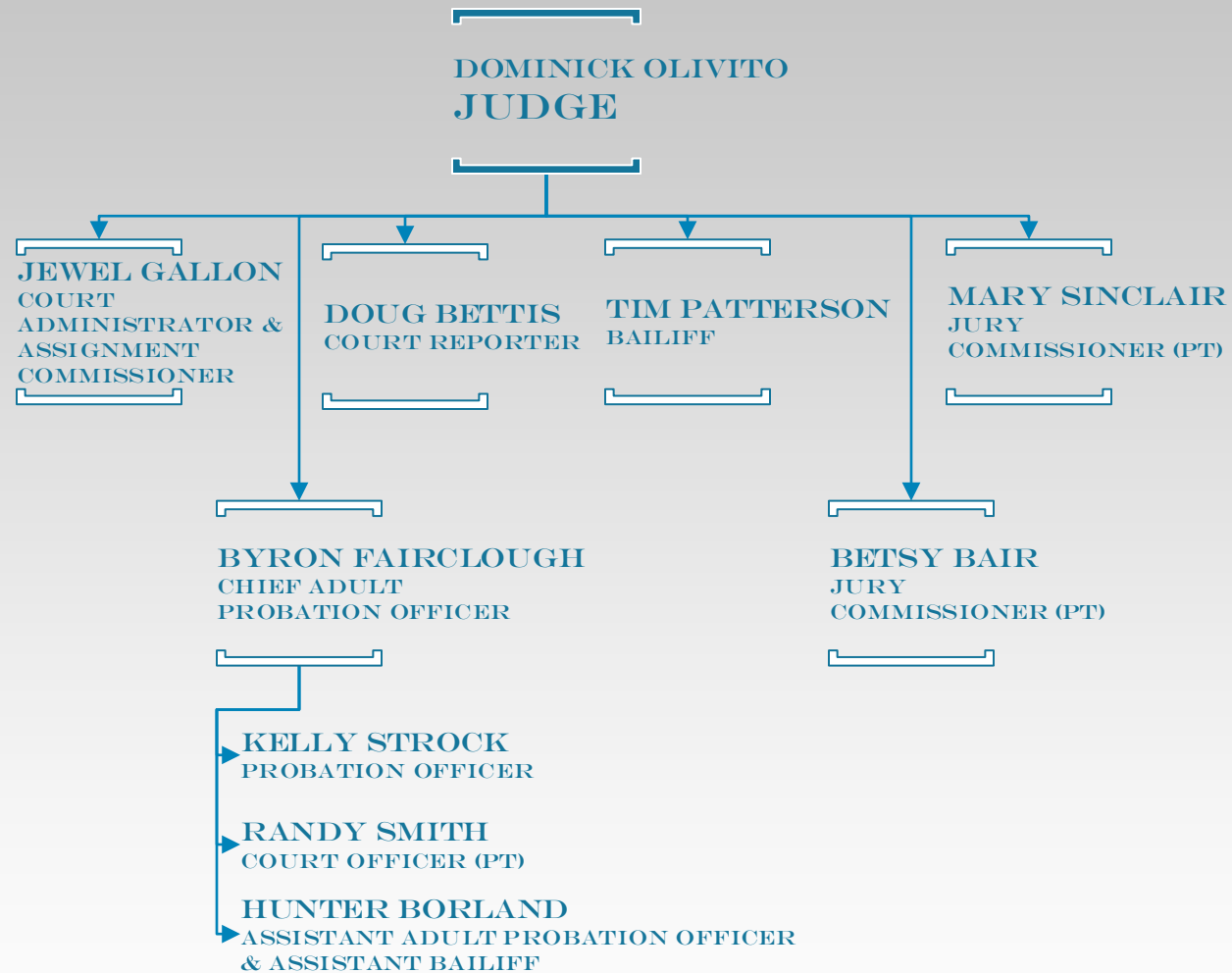
CLERK OF COURTS



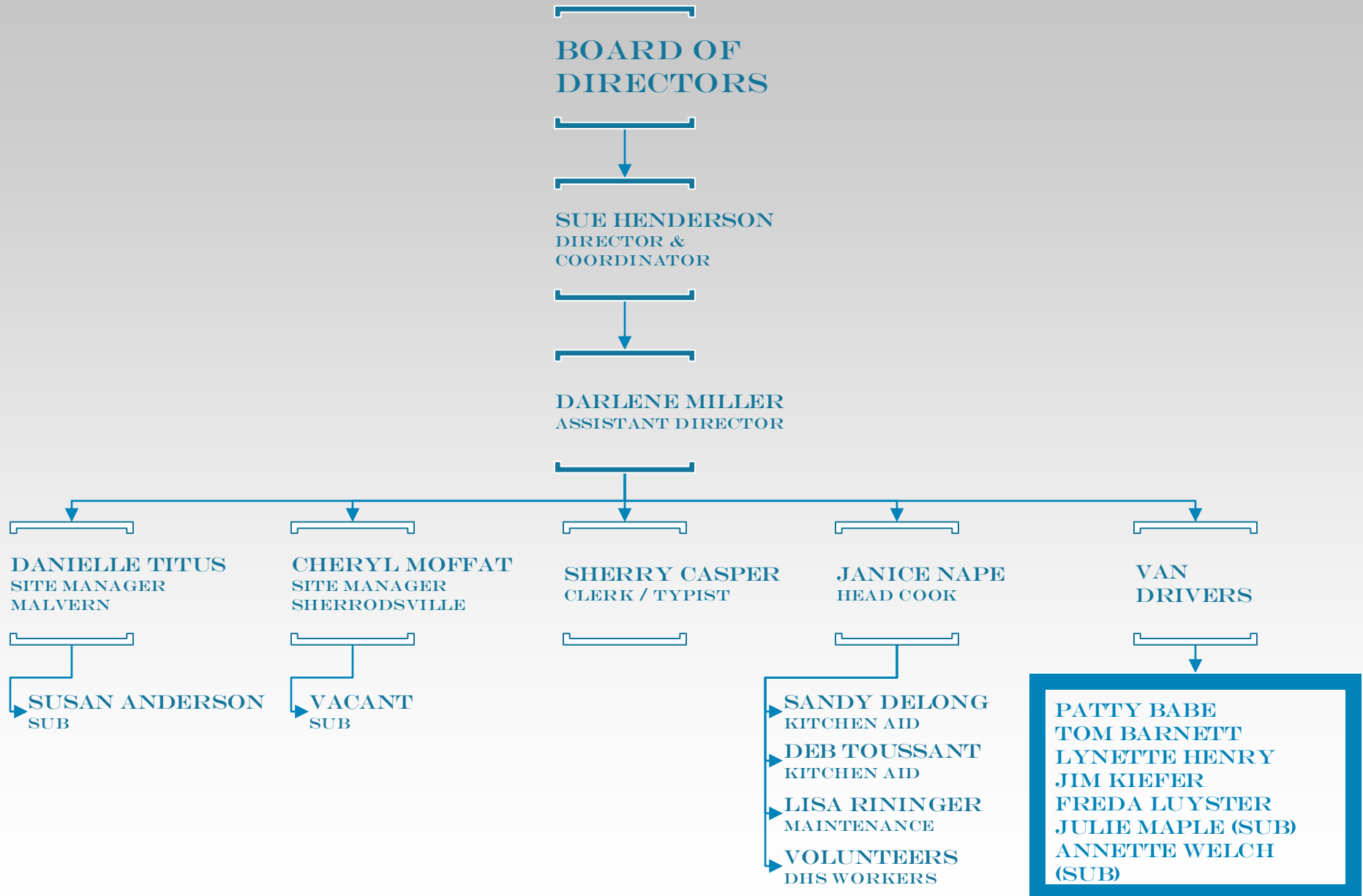
CARROLL COUNTY COMMISSIONERS



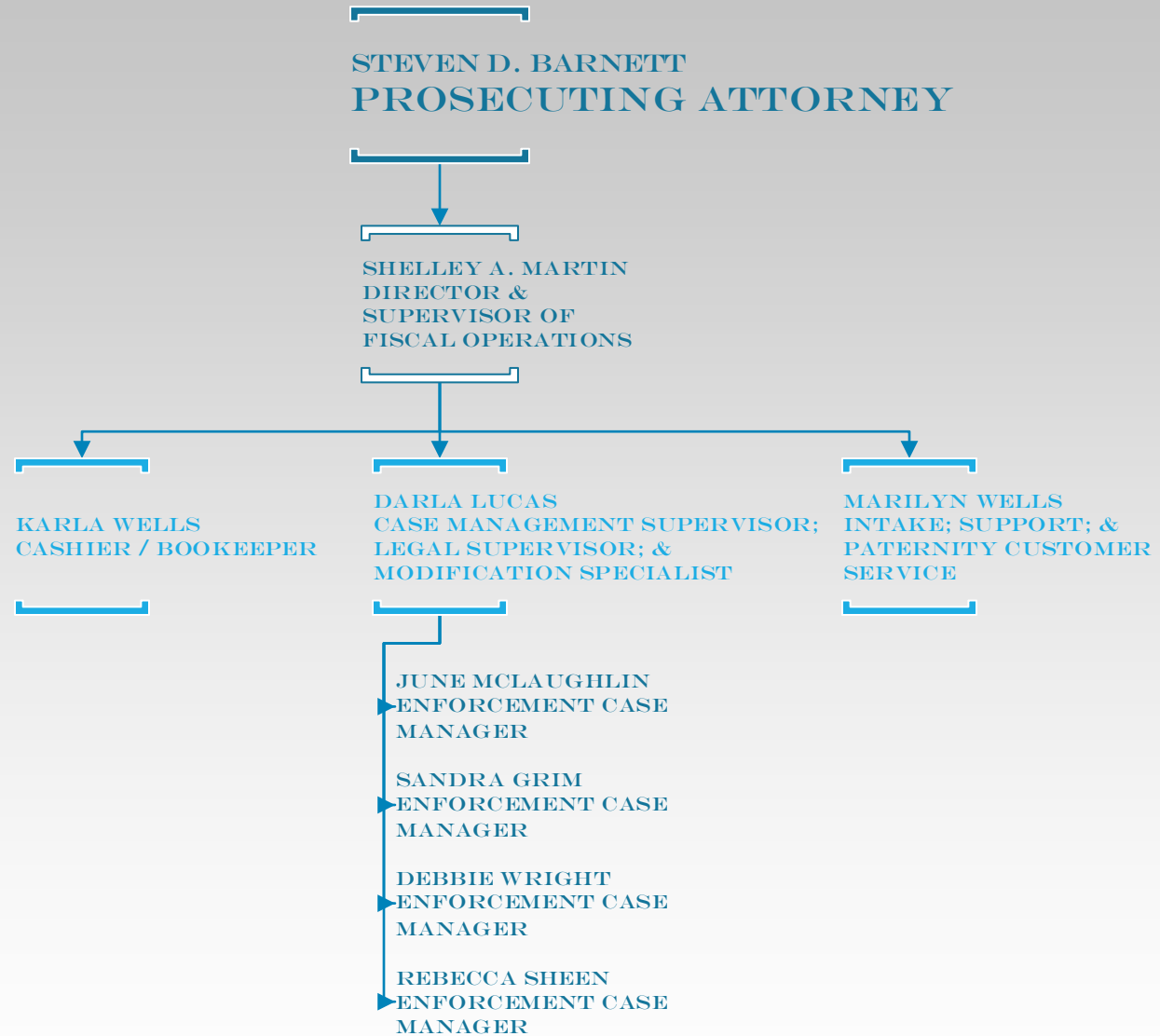
COMMON PLEAS COURT



COUNCIL ON AGING



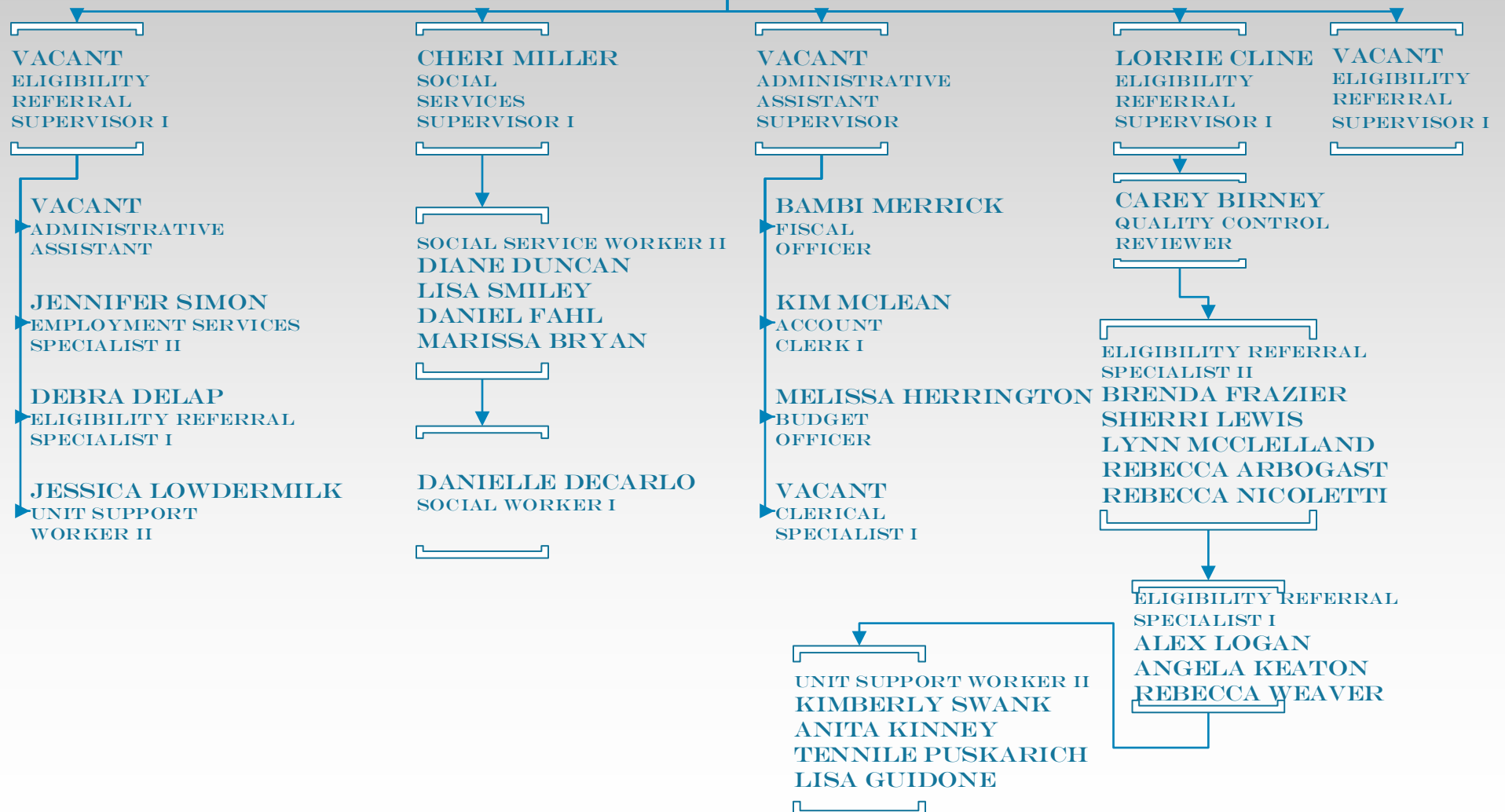
CHILD SUPPORT ENFORCEMENT AGENCY



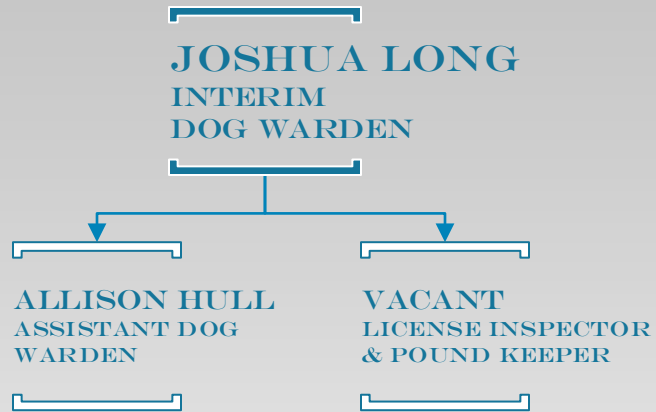
DEPARTMENT OF JOB & FAMILY SERVICES

KATE OFFENBERGER
DIRECTOR

Deb Knight
ASSISTANT DIRECTOR



DOG POUND



ECONOMIC DEVELOPMENT



TAIT CARTER
DIRECTOR



VACANT
ASSISTANT DIRECTOR



EMERGENCY MANAGEMENT AGENCY



TOM COTTIS
EMA DIRECTOR

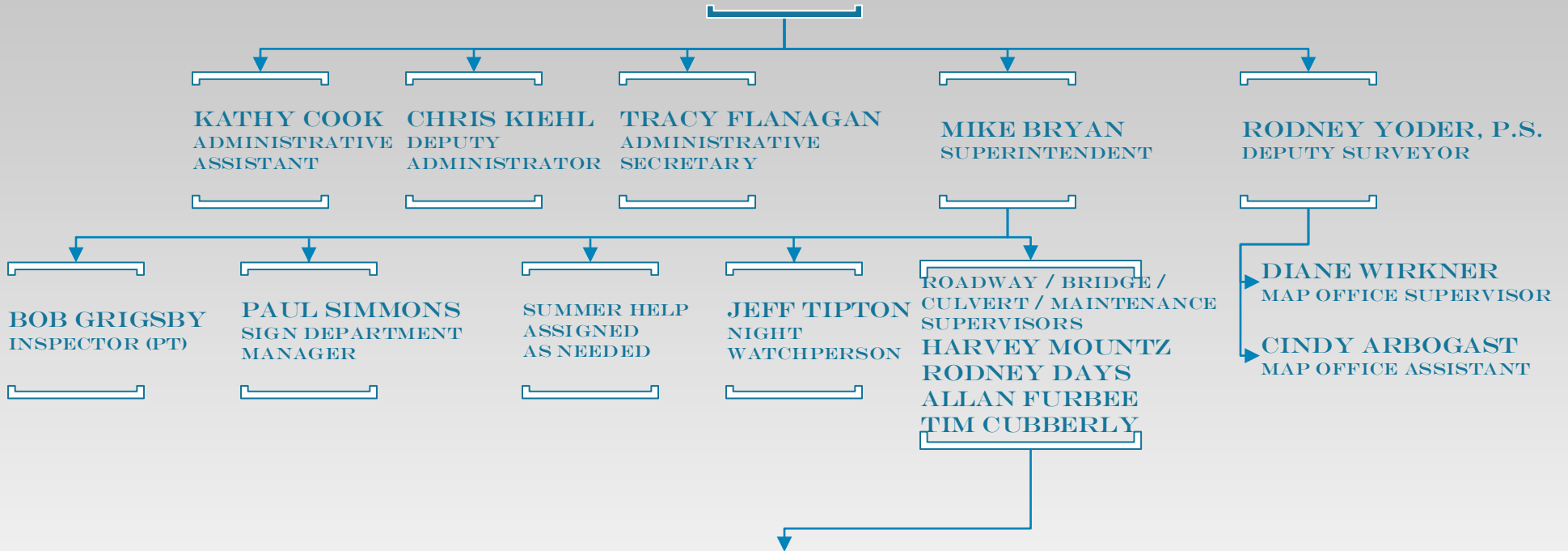


TAMMY DOWDELL
EMA/LEPC
DEPUTY DIRECTOR



ENGINEER

BRIAN J. WISE, P.E., P.S.
COUNTY ENGINEER



HIGHWAY WORKER I – HIGHWAY WORKER IV (ASSIGNED AS NEEDED)

JIM BRACKIN

MARK BRANNON

CLINT CASPER

DALE GEORGE

LARRY GRANGER

CHRIS HAWK

GEORGE HENDRICKSON

BRUCE HLLIARD

TOM JONES

JEFF KOHLER

CALVIN LOGAN

MATT MANFULL

DUANE MCINTIRE

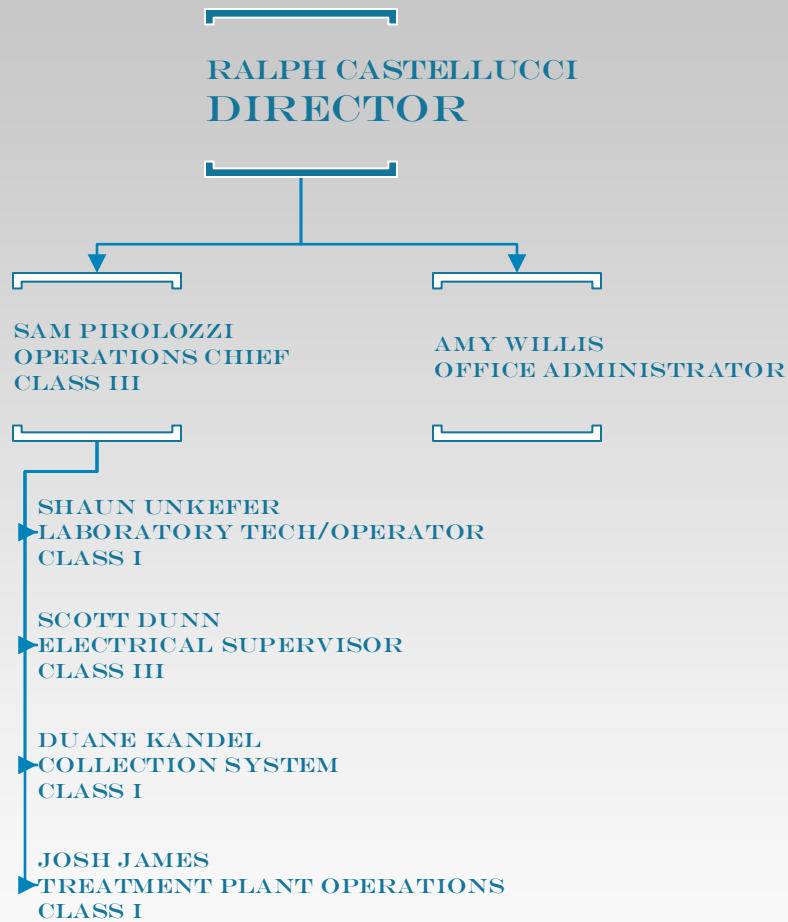
JEFF RIEGLE

JONATHAN STENGER

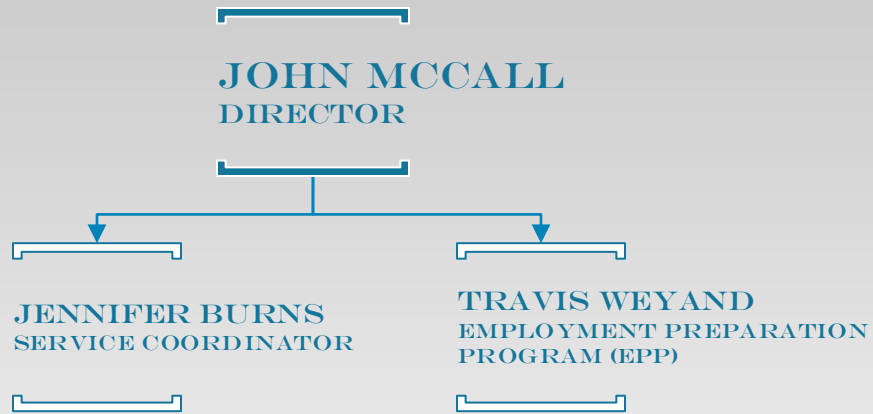
HAROLD TAGGART

DALE TINLIN

CARROLL COUNTY ENVIRONMENTAL SERVICES



FAMILY & CHILDREN FIRST COUNCIL (FCFC)



GENERAL HEALTH DISTRICT

BOARD OF HEALTH

DR. RICHARD CLARK, M.D.
MEDICAL DIRECTOR

LEANN CLINE, BSHSA, MPH
HEALTH COMMISSIONER

AMY CAMPBELL, BS
DIRECTOR OF COMMUNITY
HEALTH PROMOTION AND
PLANNING DIVISION

THOMASINE MOORE
VITAL STATISTICS,
REGISTRAR/FISCAL
OFFICER

MARCY GREAVES, RN, BSN
DIRECTOR OF NURSING

SCOTT LENIGAN, BS, RS
ENVIRONMENTAL
HEALTH DIRECTOR

NATASHA YONLEY, MPH
COORDINATOR OF PUBLIC
HEALTH PREVENTION
STRATEGIES & INFORMATICS

CORINNE REN
DEPUTY REGISTRAR

VACANT
MEDICAL CONTRACT STAFF
NURSE PRACTITIONER

CORINNE REN
ENVIRONMENTAL
HEALTH SECRETARY

MICHELLE GENETIN, BS
COMMUNITY HEALTH
EDUCATOR - SAFETY ADVOCATE
GRANTS

AMY CAMPBELL
DEPUTY REGISTRAR

JULIE HALFHILL, RN, BSN
PUBLIC HEALTH NURSE I
CLINIC & CMH

MYRA PANCHER, BS, RS
REGISTERED
SANITARIAN III

CAITLIN MATHEWS, DTR, MS
TINA MARINI, BS, SIT
COMMUNITY HEALTH
EDUCATOR - TOBACCO USE
PREVENTION AND CESSATION
GRANT

BARBARA WARNER, RN
PUBLIC HEALTH NURSE II
CMH

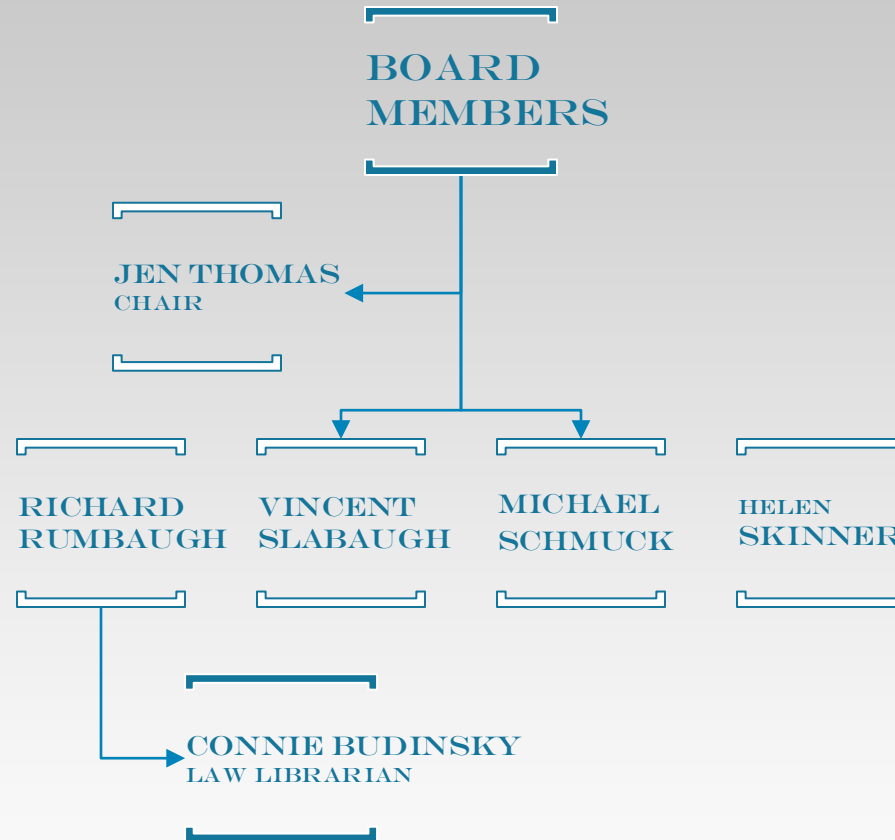
TINA MARINI, BS, SIT
SANITARIAN-IN-TRAINING
COMMUNITY HEALTH
EDUCATOR

SUSIE FREW, RN, BSN
MANAGER OF COMMUNITY HEALTH
OUTREACH & PROMOTION

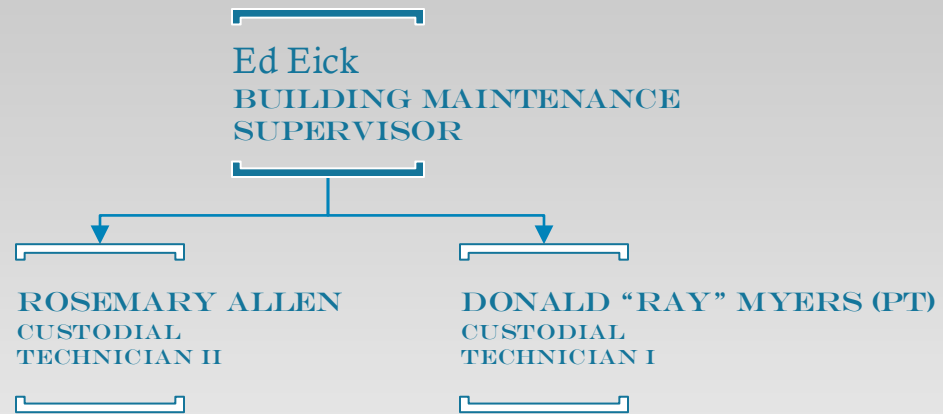
KERI HARSHBARGER
NURSING DIVISION CLERK

HOLLEE HOLMES
SEASONAL CLERICAL
HELP

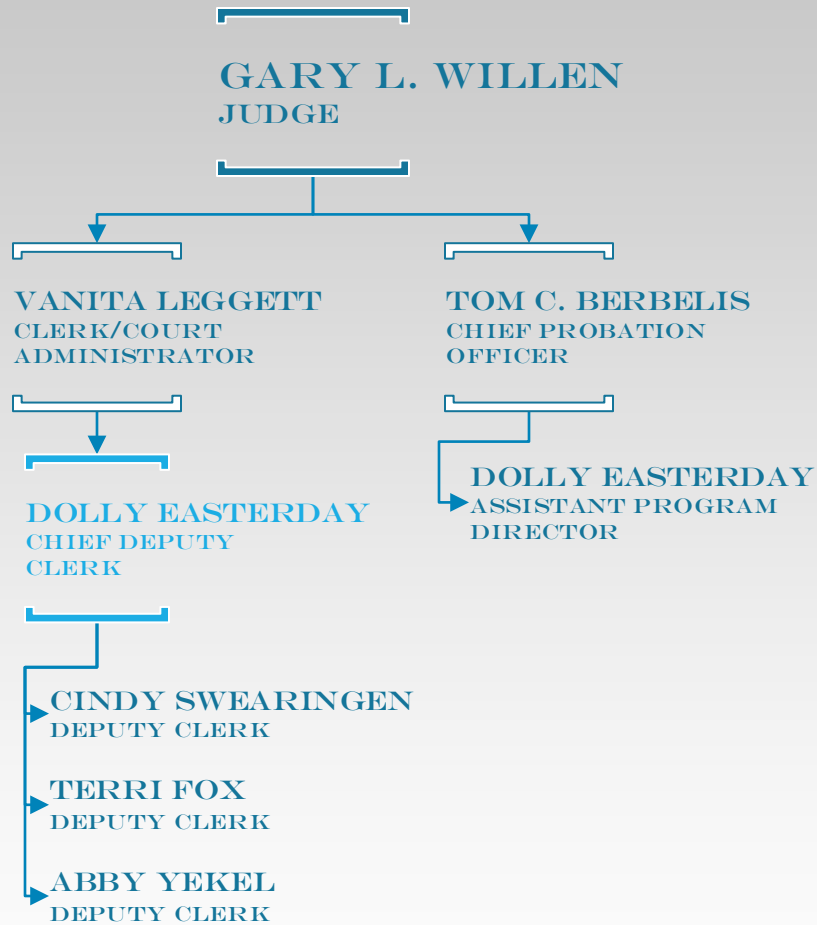
CARROLL COUNTY LAW LIBRARY ASSOCIATION



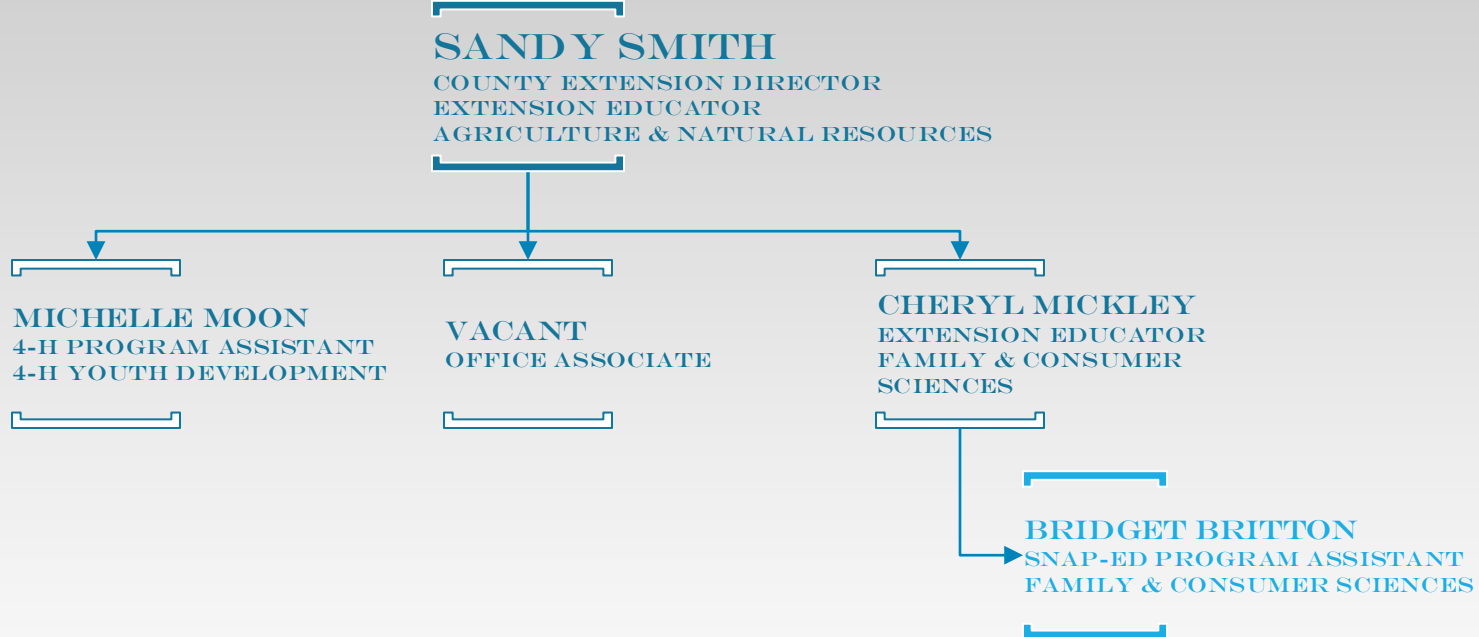
BUILDING & GROUNDS MAINTENANCE



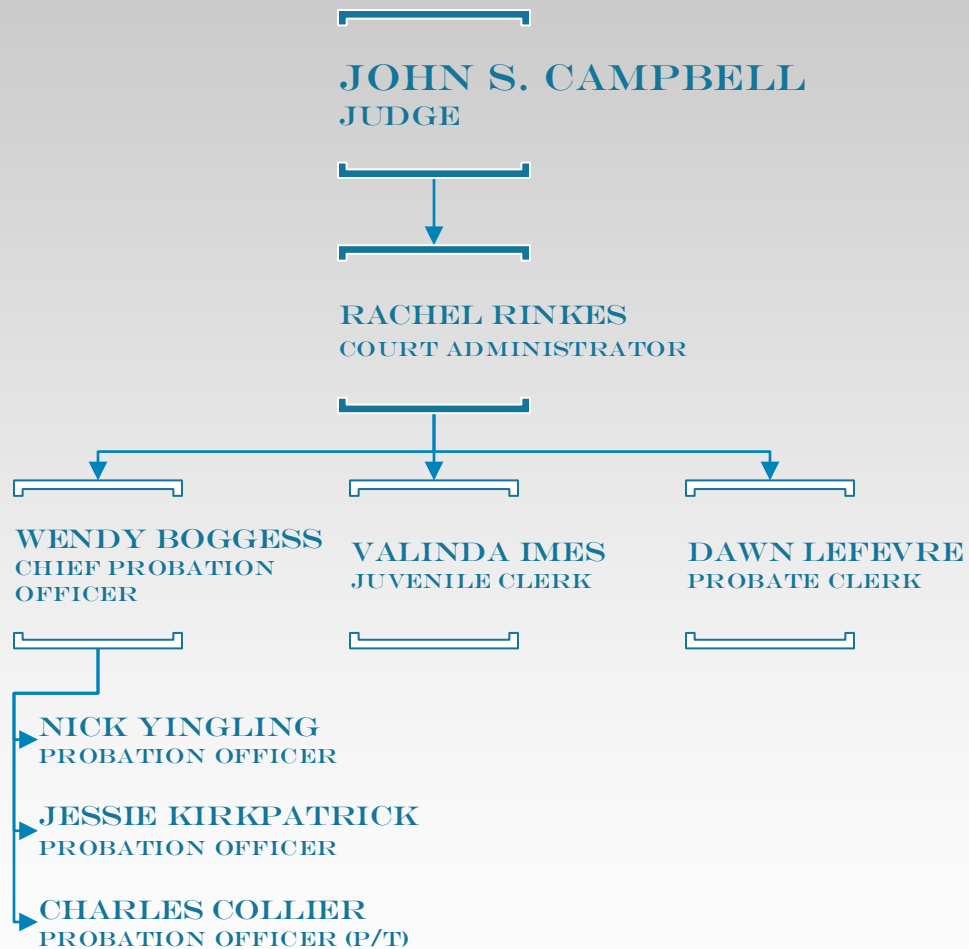
MUNICIPAL COURT



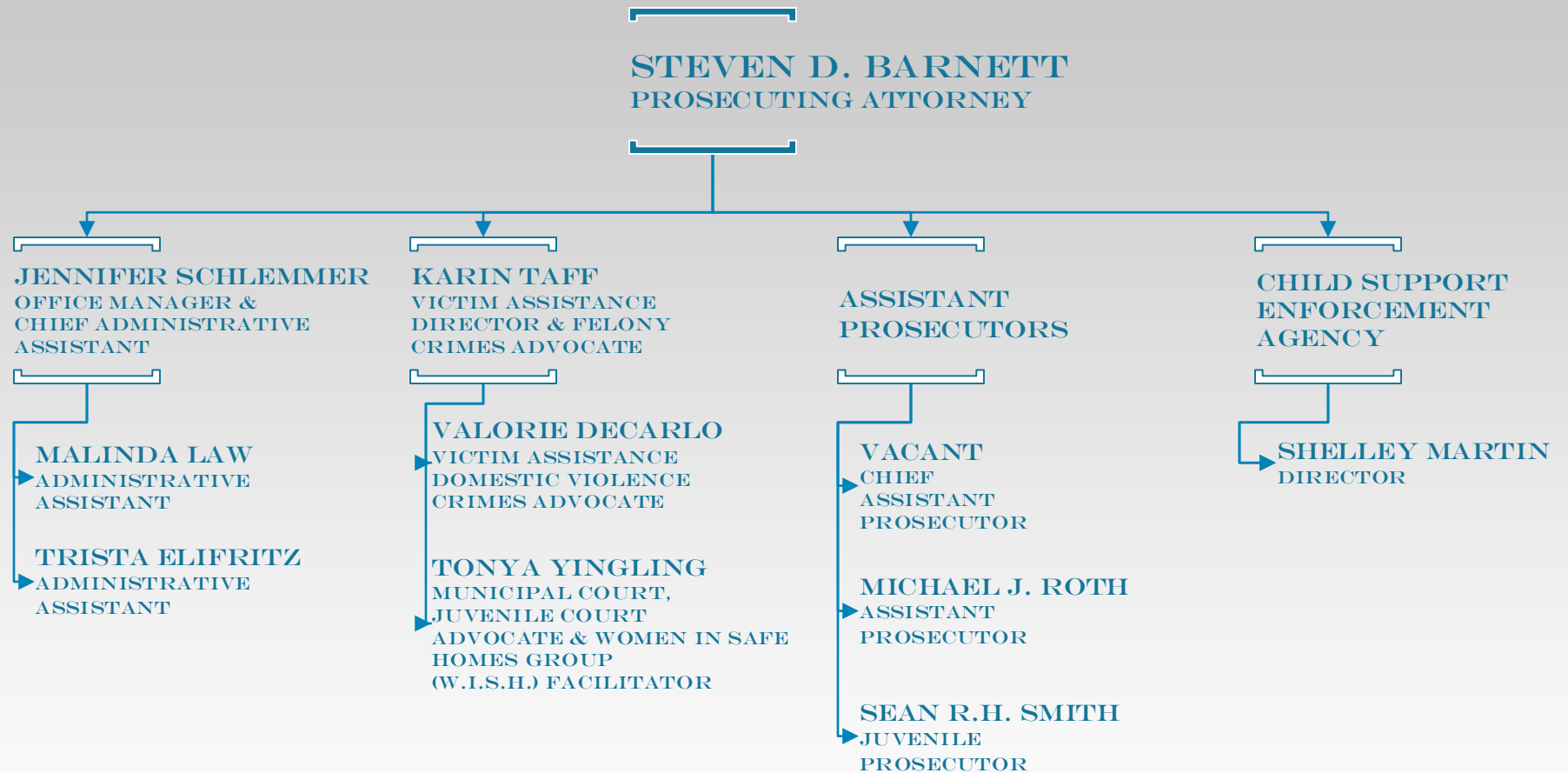
OHIO STATE UNIVERSITY EXTENSION



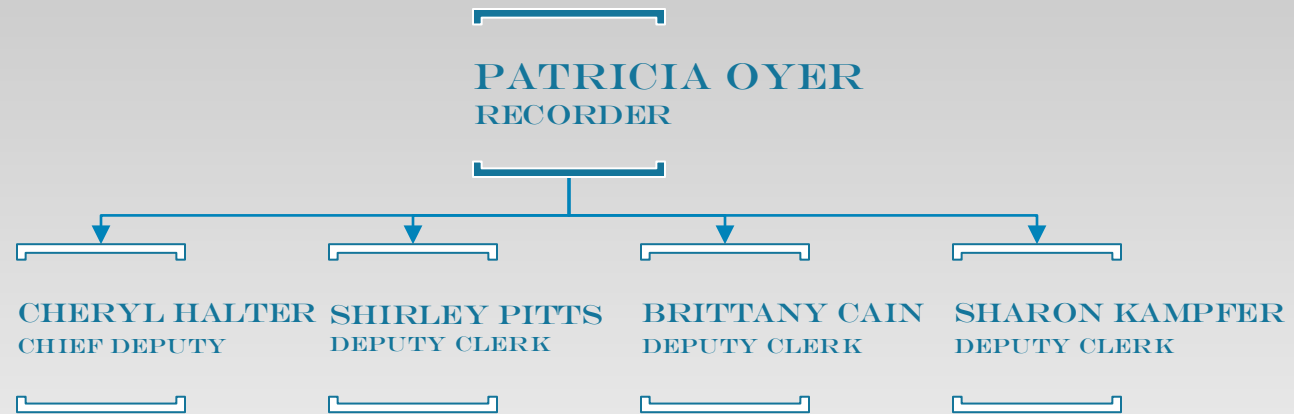
PROBATE / JUVENILE COURT



PROSECUTING ATTORNEY



RECORDER



REGIONAL PLANNING

BOARD

GARY PEARCE, PRESIDENT
ROD YODER, VICE PRESIDENT
TOM KONST, SECRETARY



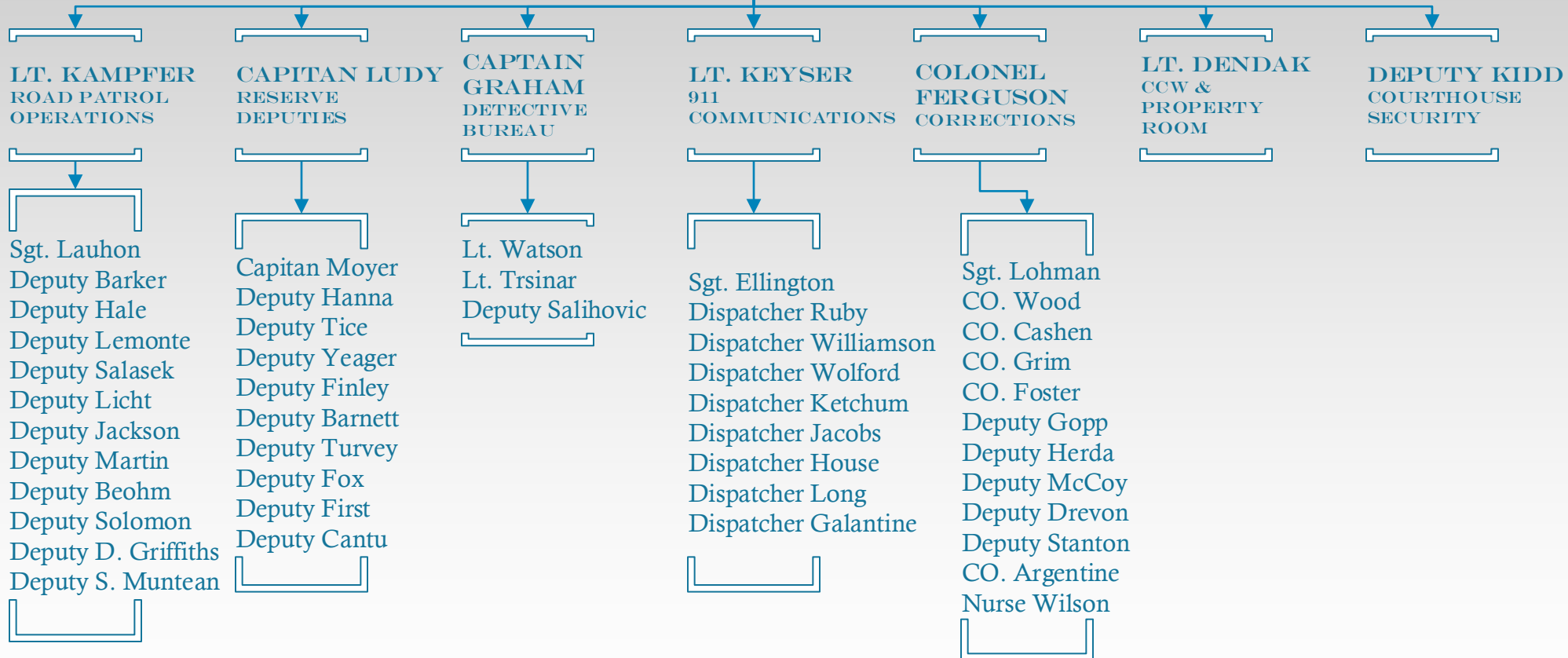
VALERIE S. MOSSOR
DIRECTOR

SHERIFF'S OFFICE

DALE R. WILLIAMS
SHERIFF

JEAN KOHLER
ADMINISTRATIVE
ASSISTANT

BARB SINCLAIR
CINDY HILLIARD
KITCHEN STAFF



SOIL & WATER CONSERVATION DISTRICT

BOARD MEMBERS

CLIFFORD MILLER, CHAIRPERSON
JOHN MCKARNS, VICE CHAIRPERSON
DOUG ESHLER, SECRETARY
ROGER THOMAS, TREASURER
BRAD LUCKEY, FISCAL AGENT



KIMBERLY VANCE
DISTRICT ADMINISTRATOR

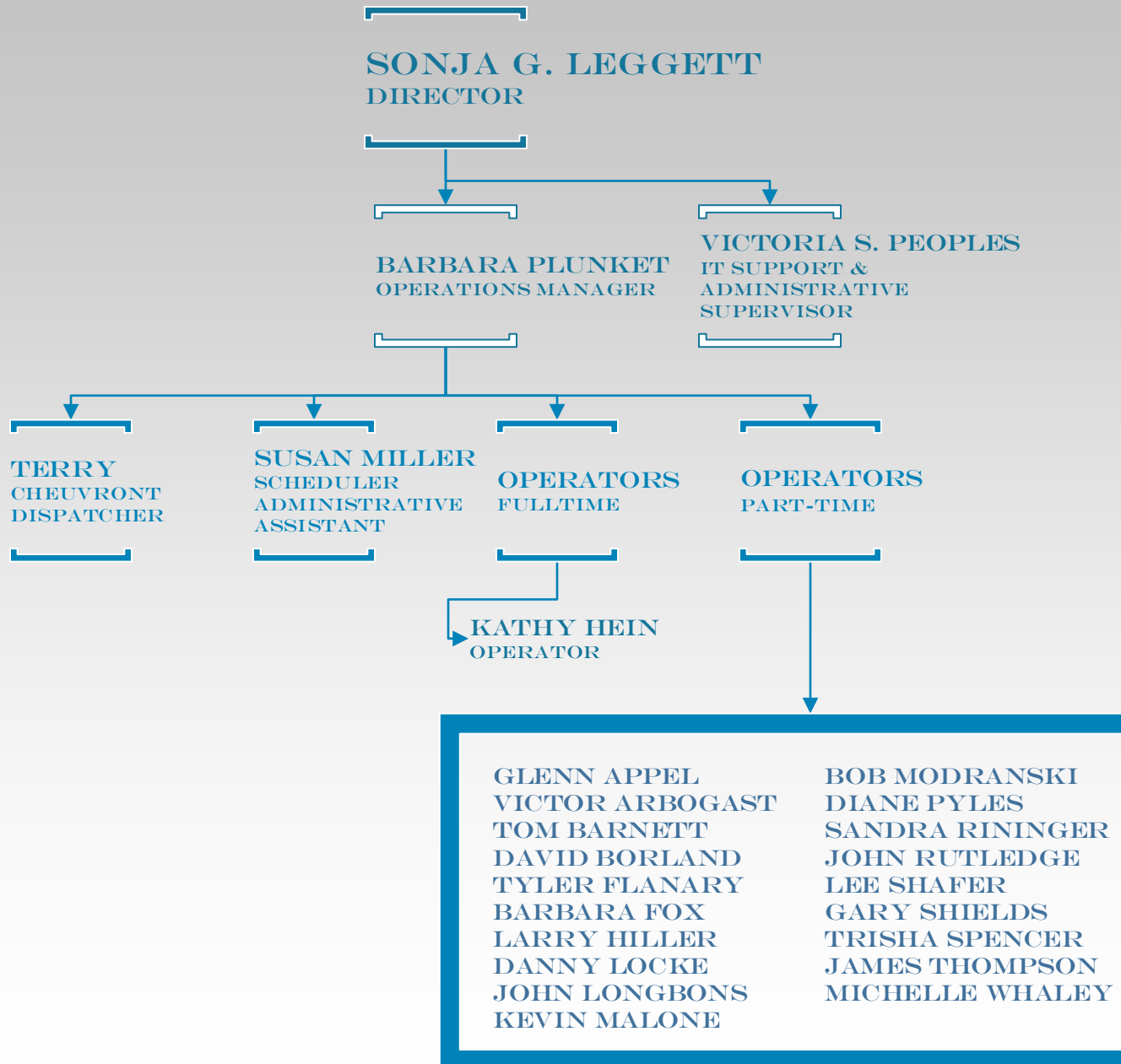


KATELYN VALDINGER
TECHNICIAN

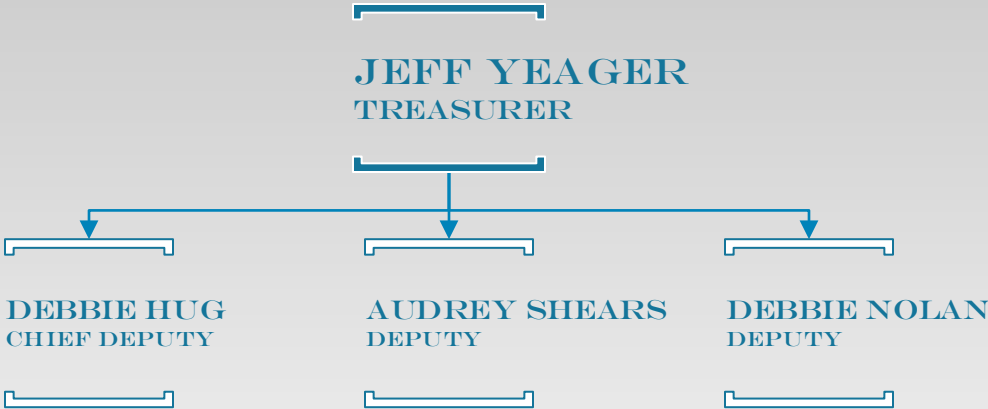
JOSEPH MAYLE
TECHNICIAN

JOSH BRITTON
WATERSHED SPECIALIST

TRANSIT



TREASURER



VETERANS SERVICE COMMISSION

